

Information • Entertainment • Business • Services • Employment • Autos • Agriculture • Home & Living • Health

PROMOTER

The

Wild Meets Mild

Encounters with bears becoming much more common in the Red River Valley

Inside:

- Employment
- Automobiles
- Senior Living
- Events
- Entertainment
- Classifieds
- Agriculture
- Auctions

Salute to our Hometown Heroes



July 2021 / Vol 29 - Issue 7 / Largest Door-to-Door Saturation Circulation in the Valley!

YOUR LOCALLY OWNED COOP

#1

Fuel & Propane Supplier in your area

We Match Pricing

PETRO SERVE USA

Helping America Fuel Better®

Switch to PSUSA, open an account and receive a FREE Tank Monitor System for 1 year when you qualify. Ask for details.

Petro Serve USA pays back 100% of profits to the customers. Customer Owned COOP. We put money back into small communities.

CALL US

PSUSA Offers:

- Propane delivery for Home, Farm and Commercial Use
- Propane Tank Rental & Sales Plan
- Tank Repair & Service

Diesel Fuel Delivery for Farm, Commercial & Home Use

- Call for Bulk & Transport Loads Pricing
- We are strong supporters of Ethanol & Bio Fuels to support our Local Farmers

701-282-3201 • 1-855-854-FUEL(3835) www.petroserveusa.com

Twin Valley
Assisted Living - Memory Care
(218) 584-5181

Assisted Living Openings Available

Hawley Senior Living
(218) 483-3337

The Red River Valley's Largest Monthly News Magazine

Western Minnesota Steam Threshers Reunion

Sept 3 - Sept 6, 2021

Featuring
Otto, Oliver & Hart Parr Engines

Season Tickets \$25.00
Daily Passes \$14.00
Kids under 14 Free

Full & Miniature Steam Train Rides
Many Rare Steam & Gas Engines
Tractor Pull, Prony Brake & Plowing
Pioneer Ladies Exhibits & MORE!



FUN FOR ALL AGES!

ALL INCLUSIVE WITH ADMISSION

- Train rides on the big 353 Locomotive and miniature railroad
- Giant working steam engines & shovels
- Rare, antique gas engines
- Steam carousel rides
- Horse power demonstrations, plowing, tractor pulls, blacksmithing, foundry & sawmills
- Pioneer living exhibits & MORE!

Every LABOR DAY Weekend

 @WMSTR | Rollag, MN | www.rollag.com

Every Auction
Tells a Story, Let Us
Share Yours.™

Steffes Group, Inc. is a nationally recognized leader in the auction industry.

We perform On-Site & Online Auctions, Large Agron Events, Farm Real Estate Auctions, Land Brokerage & Auctions, Farm Asset Management, and Equipment Appraisals.

**Selling Land & the
Equipment to Farm it**

Since 1960

SteffesGroup.com

2000 Main Avenue East, West Fargo, ND 58078 | 701.237.9173

Grand Forks, ND | Waford City, ND | Litchfield, MN | Sioux Falls, SD
Mt. Pleasant, IA | Lexington, NE | Ames, IA | Mason City, IA





Publisher's Notebook

Commercials memorable stars

Do you remember who Dick Wilson was? That name might not mean anything to you now, but if you grew up in the 1960s and '70s, he was one of a long line of recently departed TV commercial icons that will long be remembered.

The 91-year-old Wilson, who passed about a dozen years ago, played the ever frustrated grocer, "Mr. Whipple," in over 500 Charmin toilet paper commercials from 1964 to 1990. He would chase down and admonish shoppers in his store who abused the Charmin on his shelf only to catch himself doing the same at the end of the spots.

They were always somewhat the same, but they stuck in your mind. As a child growing up in the TV generation, they became a comfortable part of your collective world.

Wilson joins several other memorable friends from the small screen such as Jesse White, the lonely Maytag repairman from 1967 to 1988 who passed in 1997; Virginia Christine (Folgers' Mrs. Olson for 21 years from 1965 to 1986) who passed ten years later; and Palmolive spokeswoman Jan Minor (Madge the manicurist who praised the gentleness of her dish detergent for 27 years)

who departed from this world in 2004.

These four were never big stars. They had real names most would never recognize on a trivia game show. They are, however, characters that will live on forever in the minds of once impressionable young TV viewers, thanks to the repetition of their spots, the simplicity of their message, and the creative forces of Madison Avenue.

So long, Mr. Whipple. In heaven, you can squeeze all the Charmin your heart desires!

John W. Kolness,
Publisher

john@redriverpromoter.com
218-861-6708

International Student Exchange

Jannette Wenshou
Area Representative



(612) 916-0589
nettassather@hotmail.com
northcentral.iseusa.org

Ron Nelson
REALTOR®



Licensed in Minnesota and North Dakota

Cell: 218-790-2245
Office: 701-205-1350
Home: 218-861-6504
ron.nelson@iheartexit.com
www.ron-nelson.com
P.O. Box 383 Perley, Mn
Each Office is Independently Owned and Operated.

Celebrating our
29th year in 2021!

The Promoter

"Since 1992"
The Central Valley's Largest
Circulating Paper-Circ 20,000
Published by
Heritage Publications, LLC
P.O. Box 10
Hendrum, MN 56550
218-861-6708
redriverpromoter.com

Email us at:
ads@redriverpromoter.com



Medicare Plans

218-281-1970

1-800-467-4708

OR LOG ON TO

www.medicareplansmn.com

www.medicareplansnd.com



Great Plans Great Rates Great Service



Ann Longtin



Ken Longtin

Your local experts are here to help

The Longtin Agency

Offices in Crookston, Grand Forks and Fargo

Reach 50,000 Readers in 102 Communities!!

ADVERTISE IN THE RED RIVER PROMOTER

ads@redriverpromoter.com - 218-861-6708

 **SUPERIOR** sales@superiorbins.com
Grain Equipment **866.822.9145**

**MARKET YOUR GRAIN & MAXIMIZE PROFITS
WITH ON-FARM STORAGE SYSTEMS**

SUPERIOR QUALITY, RELIABILITY & VALUE



www.superiorbins.com

Around Our Towns

Kelly's Chrysler Center, Inc in Ada Marks 40 Years in Business

Over the past forty years, the styles and brands of automobiles have certainly changed, but the one thing that has remained constant at Kelly's Chrysler Center in Ada is the quality of service and their commitment to their customers.

2021 marks four decades in business for Kelly's, which is located along Highway 200 West in Ada. Kelly Myers, Milt Lee, and Loren Lee founded the business on June 1st, 1981. They had bought the Chrysler franchise from Lee Bros. Sales, Inc. because Lee's purchased the GM franchise from G&W Motors. Lee Bros. Sales, Inc. started in January of 1975, when they bought the Chrysler franchise from Si Pallum. Si was the first Chrysler dealer in Ada. Si started in business in the early 1930's. Over the past years, Kelly's Chrysler Center, Inc. has received many outstanding awards. Among them, the Five Star/Dealer Excellence which Kelly's has received 14 of the first 15 years they had been in business, and the most prestigious of all, the Pentastar Award given in 1991 and 1993. Only a small percentage of dealerships in the United States receive this distinguished award for excellent sales and service. The Pentastar Award was changed to the Chargers Club.

Kelly's Chrysler was awarded this honor in 1995 and 1996. In 1997 Chrysler changed the Chargers Club to top volume dealers only, thus eliminated Kelly's from ever receiving this award again. Also in 1996, Chrysler changed the Five Star program to include new business practices. Kelly's Chrysler and their employees attained this award in 1998 and continued to be a Five Star Dealer until 2010, when they dropped the Five Star program.

Kelly Myers, who is a native of Ada, first ventured into the automobile business in high school when he helped wash cars for Lee Bros, Inc. in the mid 1970's. After graduating from Moorhead Tech in 1980 with a degree in sales and marketing, he returned to Ada and soon after began the journey which continues today. Kelly, and his wife, Lisa, who has also worked at the dealership since 1988, have two children and just welcomed their first grandchild.

Kelly's Chrysler Center, Inc. is proud to represent the Chrysler, Dodge, Jeep, and Ram truck vehicle lines. The business also has an excellent service and parts department with high customer satisfaction and they are constantly upgrading service and office equipment to keep abreast of technology and mod-

ernization. Kelly's had the Plymouth franchise until 2001 when Daimler-Chrysler chose to eliminate this car line.

As far as automobiles are concerned, Kelly expressed that his favorite was a Plymouth Prowler back in 1999. "That Prowler was the most unique, best looking car I have ever had...I had to have one when it came out," he said.

Overall trends in the auto industry today steer bigger dealerships to serve as more "remote" service departments. At Kelly's, they still pride themselves in being a small town dealer that emphasizes strong personal connections to their customers. "Our customers expect the personal touch and that is what we strive to give them," says Kelly.

Compared to 1981, cars and trucks today are more of a computer on wheels. "Cars and pickups in 1981 were much more mechanical. Today's service department is much more about diagnostics rather than mechanics...it is much more replace than repair," he added. In addition, Kelly's professional service department employees are constantly taking part in continual education to stay certified with the latest evolving technology.

Continued on page 6..

Pictured with Kelly in this story is a 1981 Dodge pickup, originally sold by Milt Lee at Lee Bros. Sales prior to the opening of Kelly's, and now owned by Kelly. The cars and trucks have changed over the years at Kelly's Chrysler, but the service and commitment to their customers have remained the same.



THE AUTO DEALERS OF ADA

Lee Bros. Sales



Highway 9 North, Ada
(800)450-9999 www.leebroadamn.com



PRE-OWNED SPECIALS



\$34,985
Stock #4505A
2015 Silverado LT Crew 4x4
Cloth, Power Seats, Backup
Camera, AutoStart, 72K Miles



\$25,900
Stock #13332
2019 Chevy Equinox LT AWD
Heated Cloth, Power Seat,
Backup Camera, 10K Miles



\$30,710
Stock #4502
2021 Buick Encore GX AWD
Heated Cloth, AutoStart,
Backup Camera, Wheels



\$39,490
Stock #4503
2021 Buick Envision AWD
Heated Leather, AutoStart,
Bluetooth, Backup Camera



\$12,985
Stock #4509A
2012 Honda Odyssey
Heated Cloth, Backup Camera,
DVD, AutoStart, 1-Owner, 161K



\$20,985
Stock #4490A
2013 Silverado LT Crew 4x4
Cloth, Power Seat, AutoStart,
Trailer Tow Package, 116K

PRE-OWNED VEHICLES

2019 Buick Enclave ES AWD 24K Miles \$34,985	2013 Chevy Silverado LT 123K Miles \$17,985
2019 Chevy Equinox LT 21K Miles \$24,985	2012 GMC Sierra SLT 108K Miles \$19,985
2018 GMC Acadia SLE 15K Miles \$28,985	2012 Chevy Silverado LT Crew 107K \$17,985
2018 GMC Terrain SLE-1 13K Miles \$23,985	2006 Chevy Uplander 255K Miles \$995
2018 Jeep Renegade Limited 18K Miles \$22,985	
2018 Buick Regal 20K Miles \$20,985	
2018 Chevy Malibu LT 33K Miles \$19,900	
2017 Chevy Traverse LT 73K Miles \$20,985	
2017 Chevy Silverado LT 2500HD Gas \$33,985	
2017 Chevy Silverado LT 68K Miles \$28,985	
2017 Chevy Colorado LT 15K Miles \$29,985	
2017 Chevy Cruze LT 38K Miles \$15,985	
2017 Chevy Equinox LT 39K Miles \$20,985	
2014 Chevy Impala Limited 56K Miles \$15,985	



NEW VEHICLE SPECIALS



2021 BUICK ENCORE AWD
\$2,700 Off MSRP
(Financed w/ GM Financial)



2021 BUICK ENVISION AWD
\$2,700 OFF MSRP
(Financed w/ GM Financial)



2021 CHEVY CREW LTZ 4X4
\$4,000 Off MSRP
(Financed w/ GM Financial)

Kelly's Chrysler Center, Inc.

Highway 200 West, Ada
(218)784-2002 www.kellyschryslercenter.com



~ PRE-OWNED PICKUP SALE ~



\$32,950
Stock #6065A
2017 Ram 1500 Crew Laramie
4x4, Heated/Cooled Leather,
Boards, Tow Pkg, 1-Owner, 78K



\$8,950
Stock #6069C
2006 GMC Canyon Ext. 4x4
SLE Package, V6 Engine,
Local Trade, Great MPG, 137K



\$35,950
Stock #6055A
2014 Ram 2500 Crew Laramie
Diesel, Long Box, Sunroof, Tow
Pkg, Boards, Loaded, 203K



\$49,950
Stock #6078A
2019 Ram 1500 Crew Laramie
Heated & Cooled Leather,
Tonneau, Boards, 1-Owner, 20K



\$32,950
Stock #6085A
2018 Ram 1500 Crew Laramie
Heated & Cooled Leather,
Boards, Bedliner, 1-Owner, 97K



\$28,950
Stock #6056A
2015 Chevy 1500 Quad LT
Heated Cloth, Backup Camera,
Boards, Tow, 1-Owner, 105K



\$49,950
Stock #5932A
2019 Ram 1500 Crew Limited
4-Corner Air Suspension,
Ram Box, Tow Package, 64K



\$29,950
Stock #6067A
2015 Ram 1500 Big Horn 4x4
Backup Camera, AutoStart,
Boards, Tonneau, Tow, 60K



\$18,950
Stock #8344A
2014 Ford F150 XLT Crew 4x4
Tonneau Cover, Boards,
Tow Pkg, Bedliner, 150K

ANNIVERSARY



Register Online or in Person:

- Webber Gas Grill
- Lots of Additional Prizes
- Cookies/Coffee Served Daily



Home Town Service & Hospitality With A Large Selection!

Major Brand Tires • Accessories • Car & Trailer Rentals • Financing Options • 4-Wheel Alignment • Touchless Car Wash • AutoStarts

Around Our Towns

Kelly's Chrysler Center, Inc. Continued from page 4

Despite all the various technical advances over the past four decades, the one machine that Kelly credits for changing the business operations side of the company more than any other is the fax machine. "We used to have to sit around and hand write up the sales order, call the bank, wait for a response and mail things in. When the fax came on the scene it made those chores much simpler," he said.

A big change since the internet age is being able to check out their new and used vehicle inventory online. Their web address is www.kellyschrysler-center.com. You can also find them on Facebook.

Kelly's Chrysler Center, Inc. employees have been very active in the Area communities. Their employees have had 100% participation in pledging to the Dekko Community Center building project in 1990 with the dealership matching all pledges. Kelly's Chrysler Center, Inc. has also encouraged all employees to assist in the Ada Future Leaders Christmas toy drive. Kelly's participates in all community parades and special events and encourages teamwork both on and off the job.

Listed below are a few of the many services Kelly's Chrysler Center provides six days a week. They

would be happy to give you an estimate for any automotive service you may require.

- Mechanical Services Available
- 4-Wheel Computerized Alignments
- Astro Autostarts
- Air Conditioning Service
- Brake Service/Resurface Drums & Rotors
- Engine Tune-Dps & Overhauls
- Ram Diesel Repairs
- Fuel-Injection System Service
- Name Brand Tires/Balancing & Repair
- Transmission Service
- Normal Repair & Maintenance
- Authorized Warranty Repairs
- Miscellaneous Services Available

- Car Rentals Shuttle Service Car Washes & Reconditioning Daytime Roadside Assistance Toppers & Bed Covers Full Line of Parts & Accessories Mopar Clothing & Toys Pickup and Delivery Service New Car & Truck Sales Used Car & Truck Sales Consignment Car & Truck Sales Trailer Sales & Rental

"Decisions we make in our life can change everything," said Kelly. "Looking back over the past 40 years, I have felt very fortunate to have been able to stay in my hometown and work with people I know. I was in the right place at the right time and I have been blessed with the many great employees. Many current and past employees have worked with us for over 20 years. I credit them for the reason we have thrived for 40 years...they have always had the customer in mind," he added.

*Congratulations
Kelly's Chrysler Center, Inc. on
40 great years!*

COLLECTIBLE COINS AUCTION

ON-SITE & ONLINE BIDDING AVAILABLE
www.pifers.com

Thursday, August 5, 2021 – 12:00 p.m. (noon)

Auction Location: Delta Hotel • Fargo, ND

- Over 500 Coins
- 90% Silver Morgan Dollars
- Fine Gold Buffalo \$50 Coins
- Fine Gold Eagle \$20 Coins
- Gold & Lunar Panda Set
- 1oz Platinum U.S. \$100
- Foreign Coins & Currency

SO MUCH MORE!
TOO MUCH TO LIST!

Full Inventory at:
www.pifers.com

OWNER:
DuWayne Bott



2011 6 Piece Gold And Lunar Panda Set
(1.9oz Gold Weight, 1oz Silver), Gold / Silver



2019 Early Release
1oz Platinum U.S. \$100



1868 AU53 Gold \$3



1873-S AU53
Closed 3 Gold \$20



4 Piece 1986 Gold
Set 1.5oz AGW



(3) 1908 MS63 No Motto \$20 Gold Eagle

CONTACTS: Kevin Pifer • 701.238.5810 or John Pierce • 701.261.8040

This sale is managed by Pifer's Auction Company, Kevin Pifer, ND #715. All statements made the day of the auction take precedence over all printed materials. The seller reserves the right to accept or reject any and all bids.



www.pifers.com

877.700.4099

Pifer's MINNESOTA AUCTION & REALTY LAND FOR SALE

ONLINE ONLY COMMERCIAL PROPERTY AUCTION



16567 12th ST. SE • Grandin, ND
Bidding Opens: August 25, 2021 • 2:00 p.m.
Begins to Close: September 1, 2021 • 2:00 p.m.



ARE YOU BUYING OR SELLING LAND?

PUT YOUR TRUST IN STEVE

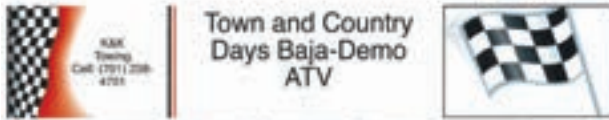
STEVE DALEN REALTOR

701.893.8517 | sdalen@pifers.com

YOUR RED RIVER VALLEY CONNTECTION

Events in the Red River Valley

3RD ANNUAL TWIN VALLEY BAJA CHALLENGE AND 4TH ANNUAL DEMOLITION DERBY



Town and Country
Days Baja-Demo
ATV



•Friday, July 16
200 Cleveland Ave. SE
Twin Valley (The Junkyard)
6:30 p.m. ATV (4-wheeler and Rangers)
Time Trial Race followed by 2nd annual
Lawn Mower Race
•Saturday, July 17
3 p.m. is the 3rd annual BAJA race
•Sunday, July 18
3 p.m. is the 4th annual Demo Derby
with kiddie demo derby right before and
at 5:30 p.m. is our First Combine Demo
pending end of demo derby.
•Admission: Adults \$10, Kids (6-12) \$5
5 and under free!!
Ranger Parking \$5 extra



Food Vendors:
Top Hawg
Sugar Shack
Uncle Sal's



National Night Out to be held in Ada on August 3rd!

National Night Out to be held in Ada on Tuesday, August 3rd at the Coliseum in the Norman County Fairgrounds. This event is America's night out and Norman County's night out against crime. This event helps citizens to be aware of the importance of crime prevention programs and the impact that their participation can have on reducing crime, drugs and violence in Norman County. It is a unique, nationwide crime, drug and violence prevention program.

The event will run from 5:30 p.m. to 8:00 p.m. Get to know the officers, emergency services employees and other important organizations that protect and serve you! On site will be law enforcement vehicles, ambulance, fire trucks, Jaws of Life, thermal imaging and a lot more!

The Ada Area Chamber of Commerce will have a fundraiser meal featuring a pork tenderloin supper from 5:30 -7:00 p.m. in the coliseum with a free will donation. Monies from this fundraiser will go to the Ada Civic Improvement Fund, community events including Fun in the Flatlands, Old Fashioned Christmas Festival and other local events. Ongoing displays and demonstrations will be at the fairgrounds in front of the Coliseum throughout the evening. Sponsors are needed to help pay for the cost of the children games and for the Red River Petting Zoo. If you would like to help sponsor one of these events with a donation, please contact Lee Ann Hall at 784-3542 or email her at leeannko@loretel.net.

Come out and join us for delicious Friday & Saturday Night Suppers

Ribeyes, New York Strips,
Filet Mignons or Lobster Tail!



County Line Bar

Grandin, North Dakota 701-484-5020

218-600-BEER

FOLLOW US ON FACEBOOK
@PERLEYS PUB

PERLEYS PUB

DAILY FOOD
SPECIALS

PULL TABS,
ETABS AND ELECTRONIC
BINGO NOW AVAILABLE!

NEW DEEP FRIED FOOD
OPTIONS!

TRADITIONAL &
BONELESS WINGS
CHEESE CURDS
MOZZARELLA STICKS
HAM & CHEESE BALLS
FRENCH FRIES
ONION RINGS
FRIED PICKLES

JULY 24TH - LIVE
MUSIC WITH THE BAND
JENNY

AUGUST 28TH - LIVE
MUSIC WITH THE
PAWNBROKERS

SEPTEMBER 18TH -
1ST ANNIVERSARY! LIVE
MUSIC WITH THE BAND
JENNY

Hours of Operation: Monday - Thursday: 4pm - 10pm*
Friday & Saturday: 12pm- 11pm* Sunday: 12pm - 6pm
*Minimum Hours - will serve later if the house is rockin'!

WELCOME TO SHELLY DAYS

SPONSORED BY

THE SHELLY COMMUNITY CLUB

SATURDAY JULY 24TH, 2021

SCHEDULE OF EVENTS:

8AM-5PM

FLEA MARKET IN THE PARK
AND CITY WIDE RUMMAGE SALE

2PM

KICKBALL IN THE PARK
ADULTS VS KIDS
BOYS VS GIRLS

5PM

SUPPER IN FRONT OF THE FIRE HALL
PULLED PORK & CHICKEN BREAST
POTATO SALAD & BEANS
BEER GARDEN OPENS

6PM-8PM

BINGO AT THE COMMUNITY CENTER - CASH PRIZES!!!

8PM-12AM

STREET DANCE FEATURING UPTOWN
SPECIAL THANKS TO SOLID CONSTRUCTION AND
ENGELSTAD FARMS

Early season drought effect on corn and soybeans

Vasudha Sharma, Extension irrigation specialist, Seth Naeve, Extension soybean agronomist, and Jeff Coulter, Extension corn agronomist

Extremely hot weather and lack of rain in Minnesota is making growers worried about the impact on crop yield. Through this blog post we have tried to provide an overview on early season drought effects on corn and soybean and provide recommendations on irrigation management.

Effects on corn

The severity of drought stress in corn is indicated by the time of day when leaf rolling begins. Plants that exhibit leaf rolling early in the morning are under more stress than those that begin leaf rolling later in the day. Drought stress during vegetative growth can reduce plant height, but it typically does not reduce the number of leaves produced (Lauer, 2012).

The nodal root system is the primary root system of corn from the three leaf collar stage (V3) until maturity. Nodal roots establish at just 0.75 inches below the soil surface. Therefore, dry soil at a depth of 0.75 inches can restrict nodal root growth, especially when the soil at this depth is loose, compacted, or cloddy. Poor nodal root establish-

Leaf rolling in mid-morning on corn at the eight leaf collar stage.

Photo by Jeff Coulter.



ment reduces the ability of corn to extract soil water and stand upright. In fields where there is poor nodal root establishment, some plants will lean from upright as early as the five leaf collar stage (V5), as their small nodal root systems are unable to support their aboveground weight. Following rainfall, additional nodal roots can establish in moist soil.

Ear size in corn is dependent on the number of rows of kernels and the number kernels per row. The number of rows of kernels per ear is set between V5 and the eight leaf collar stage (V8). It is mainly influenced by genetics, and to a lesser degree by the growing environment and agronomic management. The number of potential kernels (ovules) per row is set by the 12 to 15 leaf collar stages (V12 to V15, respectively) and is heavily influenced by the growing environment and agronomic management (Nielsen, 2007). Therefore, drought stress during the early- to mid-vegetative stages of corn can affect potential ear size to some degree, mainly through a reduction in the number of potential kernels per row. However, the actual

number of kernels per row depends on the effectiveness of pollination and the number of kernels that are retained following pollination.

Typically, corn grain yield is not substantially reduced if drought stress occurs before the 13 leaf collar stage (V13) (Lauer, 2012). From V13 to silking, the effect of drought stress on corn grain yield becomes more severe as the time of drought stress gets closer to silking. Yield loss due to drought stress is greatest when it occurs at silking, followed by the kernel blister through dough stages, followed by the late vegetative stages, followed by the mid-vegetative or kernel dent stages.

In conclusion, drought stress to corn during the early- to mid-vegetative stages is likely to have only a small negative effect on corn grain yield. If corn is under drought stress at V13 or beyond, yield loss is expected to be greater, with the level of yield loss dependent on the time and duration of drought stress.

Effect on soybean

Because drought stress is nearly ubiquitous throughout time and across biomes it has had a strong evolutionary impact on nearly every plant species. Plants have multiple and complex systems to respond to drought to ensure that they can produce as many viable seeds as possible.

Some important responses can be seen in soybean. But note, corn has a very similar pattern of reactions to drought. Early in drought stress, soybean plants re-orient their leaves and expose the lighter side of their leaves, to absorb as little light energy as possible. Next, plants slow their rate of leaf expansion to reduce water losses. At roughly the

Continued on next page

LOFTON AVIATION
Custom Application of Fertilizer & Chemicals
19335 5 St. N
Georgetown, MN 56546
218-779-1678
218-861-6252
Chad Lofton

Goose River Realty
Celebrating 25 Years of Service
FARMLAND SALES & MARKET EVALUATIONS FOR ESTATES
RESIDENTIAL APPRAISALS
Gary Leraas, Broker-Owner
701-430-1775
gary@gooseriverrealty.net
Fargo to Grand Forks Residential Sales
A member of the Fargo & Grand Forks MLS Systems
Web Site: www.gooseriverrealty.webs.com

GreenWood Roll-Off and Recycling

15- and 20-Yard Dumpsters Available.
✓ Residential and Commercial!
✓ Reliable!
✓ Reasonable Rates!
✓ Service and Quality is our top Priority!
Call US TODAY!
218-329-2787
Located in Georgetown, MN
Licensed and Insured

ASK ABOUT OUR SPECIALS ON OUR WOOD RECYCLING SERVICES!
Visit us @ Gwrr.org



AMERICA'S NUMBER ONE
BROCK® DEALER

- Brock Grain Storage
- Turn Key Construction
- Grain Dryers
- Catwalk & Conveyor Systems
- Millwright
- Complete Design & Construction Services

701-293-7202

1-800-747-4499

West Fargo • Fergus Falls
Jamestown • Minot

GATEWAYBUILDING.COM



John Satrom

In Need of an Ag Loan?



Jalen Ham



Nick Gordon

See Your Ag Lending Specialists at



nwbanks.com



Early season drought effects Continued from previous page

same time, plants reallocate resources from shoot development to root development, and within the roots, the soybean plants reallocate resources from shallow roots to assist with the development of deep penetrating roots. Nitrogen fixation begins to fail under dry soil conditions. Lastly, as drought stress intensifies, photosynthesis itself can be compromised.

Research (Hoogenboom et al., 1987a) supports conventional wisdom that non-irrigated soybean roots penetrate much deeper in the soil profile than well-watered plants. In this study, total root mass between irrigated and non-irrigated soybeans was similar, however irrigated soybeans proliferated in the top 2' of soil. Non-irrigated soybeans had roots much deeper in the profile.

Due to reallocation of nutrients and reduced water potential in the shoot, early season drought stress reduces rates of stem elongation and leaf area expansion (Hoogenboom et al., 1987b), leading to smaller leaves than fully watered plants. After rains return, however, drought-stricken plants have been shown to grow more rapidly than those not stressed (Hoogenboom et al., 1987b), resulting in similar sized plants overall, producing similar yields.

From a practical standpoint, significant drought stress during the vegetative period of soybean development primarily pauses plant growth. Leaf expansion is slowed or stopped and only under severe drought does photosynthesis slow or stop. Reducing photosynthetic rates results in a permanent effect on yield potential as this represents a lost opportunity for yield accrual. However, at early growth stages, soybean plants are collecting only a portion of available light, anyway. Reduced photosynthetic rates for a few hours per day tends to have little yield effect on soybean prior to R1.

In fact, soybean is quite resilient to most stressors through early reproductive growth. Figure 1 shows soybean yields relative to unstressed plants in a series of experiments where soybeans have been exposed to stresses such as (drought, shading, heat, or defoliation). While stresses during seed filling can have a large effect on seed yield, little research, including that on drought, has demonstrated significant yield losses to stressors prior to seed filling.

Water use and irrigation

The term evapotranspiration (ETc) and crop water use are used synonymously to describe the water movement from the soil through evaporation and from the plant surface through transpiration. Understanding of the critical water use periods for corn and soybeans to maximize the yield potential and to improve water use efficiency can help in efficient irrigation management.

As discussed above, drought stress is less detrimental during the vegetative growth stages in both corn and soybean. The highest demand for water does not occur until the plant is in the transition phase from vegetative growth stages to reproductive growth stages. High temperatures early in the season have increased the ETc (crop water demands-see Figure 2) as compared to last few years, but water stress is not that critical at this stage. In an average growing season, ETc for corn and soybean at this stage would be around 0.1 to 0.2 inches/day. If enough soil water (~35% of total available water) is available in the root zone at this stage, corn and soybeans could sustain without any yield loss.

The maximum amount of water that the soil can hold and total water available to the plants is dictated by the soil type. Fine textured soils, like clays, can hold more water than coarse textured sandy soils. For your particu-

lar soil type, the soil water and soil water depletion can be measured and estimated using soil moisture sensors or weather based irrigation scheduling tools <https://z.umn.edu/irrigationmgmt>. For the early season corn and soybeans, relying on stored soil moisture as much as possible is recommended to encourage deeper root systems. Crops with deeper root systems can withstand drought conditions better.

For irrigated fields, water applications in early growth stages can be reduced without impacting the yield much, as long as water stress is alleviated during early reproductive periods (Lamm and Kheira, 2008). For corn and soybean, soil water depletion can be as high as 60-70% in the early vegetative growth stage without affecting plant development.

In dry seasons when crop water demands are really high, like the one we are experiencing right now, water availability for irrigation could be an issue later in the season so it is beneficial to use this water cautiously at the stages that can withstand water stress and use that water later in the season near tasseling and early reproductive periods.

Sources

Patricio Grassini, Nicolas Cafaro La Menza, Juan I. Rattalino Edreira, Juan Pablo Monzon, Fatima A. Tenorio, and James E. Specht. 2021. Soybean. In *Crop Physiology: Case Histories for Major Crops*. Chapter 8. 282-319

Hoogenboom, G., M.G. Huck, and C.M. Peterson. 1987a. Root growth rate of soybean as affected by drought stress. *Agronomy Journal* 79:607-614.

Gerrit Hoogenboom, Curt M. Peterson, M. G. Huck. 1987b. Shoot Growth Rate of Soybean as Affected by Drought Stress. *Agronomy Journal*. 79:607-614

Lamm, F. R. and A. A. Abou Kheira. Effects of early-season water stresses on corn production. *Proc. 29th Annual Int'l. Irrigation Assoc. Tech. Conf., Anaheim, California, Nov. 2-4, 2008*. Available from Irrigation Association, Falls Church, VA. Paper No IA09-1052. 10 pp



Brock Blakeway

Blakeway Seeds LLC

28306 180th Ave. N, Ulen, MN 56585

(c) 701-799-0439

Top Yielding Soybean, Corn Seed and Liquid Fertilizer Sales



Located in the Hendrum Professional Center

Hendrum Homegrown and Homemade

**- Fruit Butters - Jams - Jelly
- Pancake Syrups - Pickles - Salsa - Relish**

-Find Us on Facebook!



308 Main Street, Hendrum, MN 56550

(339) 832-8820

Open Monday-Friday 11:00 AM - 7:00 PM

Norman County Heating & Cooling Celebrates 30 Years

Another area business marked a major milestone in 2021. Norman County Heating & Cooling, owned and operated by Aaron Ambuehl of Ada, celebrated three decades of serving the region since opening in April of 1991.

Ambuehl, affectionally known by many of his friends and customers as "Noodle," specializes in residential, shop, floor heating, air conditioning and air exchangers. He has seen quite a few changes in the region and in his industry during the past thirty years, but his reputation for prompt, affordable and quality service has remained a constant. Besides himself, Ambuehl is assisted by Blake Fetting of Ada.

Raised in Harwood, ND, Ambuehl's roots in Norman County run deep. His father Jack is formerly from Borup and his mother Marlys is from Ada. Most of his summers growing up were spent working on his uncle Leon Johnson's farm near Ada. After graduating from West Fargo High School he attended NDSCS in Wahpeton for two years for heating, cooling equipment service and sheet metal. After he worked for Laney's in Fargo as a service technician for two years the opportunity came up to purchase Myer's Heating & Air Conditioning in Ada from Melodie Myers.

Originally located for many years on West Main Street in Ada, Ambuehl moved his business to 312 W. 2nd



Street in Ada a couple of years ago, a location steeped in business history as the longtime home of Larson Motor Company. The building has been added onto and completely remodeled, making a great home for all the various parts and equipment needed to service his customers.

Like any other business, much has changed in his industry. When he started in 1991, there were six other heating and air conditioning shops in the county. Today it consists of Norman County Heating and Cooling and one other. Although many of the hard goods and ductwork has remained the same, trends have seen much more pre-fab material and the overall efficiency of the furnaces and air conditioning systems sold today have increased from around 70% to 98%. "Any twenty year old product in a home today is much less cost efficient than what is on the market today," says Aaron. "The savings in energy consumption in today's product is substantial," he added.

For most of his career, Ambuehl has been a retailer for Ruud brand of products. "I am proud to represent Ruud in this area," he says. Ruud has proven to be a very good product and rates very high in efficiency and reliability."

The biggest challenge Ambuehl faces today is the availability of parts needed to service older units. "Since the pandemic, the market has been very volatile, and it has become extremely hard to find certain parts and equipment. Half of my day recently seems to be spent trying to locate these parts," he says.

When he is not working on a furnace on a twenty below January evening or getting an air conditioning unit back on it's feet during the depths of a hot summer, Ambuehl spends most of his free time doing what he loves best, fishing and hunting. Several years back he and his wife Nikie, who he married 20 years ago, purchased a cabin near Warroad, MN which they enjoy very much.

"I feel very fortunate to have been able to own my own business in Norman County the past thirty years," said Ambuehl. "It is great to work in an area where you know just about everyone, and the people of this area have been great to work with."

To reach Aaron for help with your heating or air systems call him at 218-556-0349.

Great Plains Fireworks and Sports Collectibles

SPORTS COLLECTIBLES

- New product: Topps Baseball Series 2 Blasters, '95 Bazooka factory sealed box set
- On Sale: 60's era Tony Oliva autographed bat
- Email about what product you'd like to see: keithmeyer@rrv.net

FULL LINE OF CONSUMER FIREWORKS

- Open year round for fireworks sales to non-ND residents
 - Showroom fully stocked
- Hours: Saturdays 10-5; flex hours during week. Call 701-436-6140 and we'll open at your convenience.

120 163rd Ave SE, Hillsboro, ND.

West side of I-29 south on Boeddeker Drive (frontage road)

Norman County Residents Give Generously

Gary Cares One Fund Drive Nets Over \$35,000

The Gary Cares Board is excited to announce Norman County Residents donated over \$35,000 to causes near and dear to them. What a great way to acknowledge the organizations that serve us day in and day out to make Norman County the perfect place to live, work, and play. Checks will go out the beginning of July. For more information about Gary Cares go to www.GaryCares.org.

Special Shock & Awe	468.00
Special Dolly Parton Library	566.00
Alzheimer's Assn - MN	1,281.00
American Cancer - MN	2,397.00
American Diabetes - MN	1,405.00
American Heart - MN	1,323.00
American Red Cross	995.00
Arthritis Foundation - MN	595.00
Benedictine Living - Ada	964.00
Fire Dept - Ada	1,265.00
Fire Dept - Borup	537.00
Fire Dept - Gary	1,644.00
Fire Dept - Halstad	1,255.00
Fire Dept - Hendrum	525.00
Fire Dept - Perley	200.00
Fire Dept - Shelly	550.00
Fire Dept - Twin Valley	1,057.00
Gary Cares Area Foundation	907.00
Hospice of the RRV	2,119.00
LaurelCapistran-Scholarship	670.00
NCE Early Childhood	258.00
Norman Co DAC	1,801.00
Norman Co Historical/Geneology	1,677.00
Norman Co Sheriff - Canine Unit	1,380.00
Norman Co Victim Assistance	1,028.00
REACH	347.00
Rescue - Gary	2,179.00
Rescue - Halstad	1,465.00
Rescue - Hendrum	531.00
Rescue - Perley	355.00
Rescue - Shelly	645.00
Rescue - Twin Valley	1,658.00
TV-Gary Area Community Fund	562.00
Walk by Faith - Equine Therapy	674.00
Total ONE FUND - Income	35,283.00



Reusables THRIFT STORE

Household Items - Decor - Clothing - Shoes - Toys - Furniture

REACH ReUsables Thrift Stores

Location in Hawley: 208 6th St
Phone: (218) 483-4225

Hours: Tues thru Fri 9:30-5:30

Donations accepted during regular business hours; please call ahead with large donations.

Location in Hendrum: 304 Main St
Phone: (218) 861-5700

Hours: Tues, Wed & Fri 9:30-5:30 & Thurs 11-7

Donations by appts. only.

JULY 2021 MONTHLY SALES

Week of July 6th: \$5.00 brown bag

Includes clothes & shoes; some exclusions and limited quantities apply. *See stores' signs for details.

**Week of July 13th:
LINENS 25% off**

**Week of July 20th:
KITCHENWARE &
APPLIANCES 30% off**

**Week of July 27th:
ALL SWIMWEAR
\$1.00 ea.**

*SUPER SALE

ALL CHILDREN'S
CLOTHES \$1.00

*SUPER SALE

ALL PURSES
\$1.00 EACH

*SUPER SALE

ALL SUMMER
SANDALS \$1.00

*EXCLUDES CAREER WEAR



Rural Enrichment And
Counseling Headquarter:

Some of REACH's statistics for the month of May.

- . 876 backpack meals distributed (6 different schools)
- . 752 lbs. of food distributed through our food pantry.
- . 3 client referrals for counseling services.
- . 3 rides given for senior citizens.
- . 395 frozen meals distributed for senior citizens.
- . 14 families served.



The Promoter

ADVERTISE IN THE RED RIVER PROMOTER

ads@redriverpromoter.com - 218-861-6708

**CHECK OUT ALL THE GREAT
ITEMS COMING IN EACH AND EVERY
WEEK AT THE
REACH THRIFT STORE IN HENDRUM!**

POST FRAME PACKAGES

"To meet all your needs, built to your specs"



metal sales
manufacturing corporation
ms



2711 State Hwy. 200 • Ada, MN 56510
email: adabctr@loretel.net

Check with us for
all your decking
needs from Wood
to Composite
Decks and Rails,
Three and Four
Season Porches



We offer
Computer Drafting of Homes,
Garages & Additions

Continuous 6 bar fencing
20ft lengths, IN STOCK

Calf Shelters
12ft IN STOCK

Free Standing 25'
Windbreak Panels
Just Arrived

24' & 30' Self Standing Panels
Just Arrived

Cradle Style Round Bale
Feeders Single or Double

Pan Feeders
37" w x 11" d x 20' long or 45" w
x 14" d x 20' long

Ted's Dairy Service (218) 253-2989

Red Lake Falls, MN
www.tedsdairyservice.com

Retail Spot in the Hendrum Professional Center

Longtime Hair Salon Includes
Variety of Equipment
**PERFECT START UP FOR
ANYONE WANTING TO OWN
THEIR OWN BUSINESS**
**Very Affordable Rent with
NO UTILITIES!***

Contact the
City of Hendrum
218-861-6210
Hendrum@Loretel.net

JUST 25 MINUTES NORTH OF MOORHEAD ON HIGHWAY 75!
* Contact City for More Information

Guaranteed Lowest Prices!

Check us out on Facebook!

Large Selection & Display
of Gas & Wood Burning
High Efficiency, High Quality
Fireplaces & Stoves

HEATMOR
Quality Since 1984

NAPOLEON

MIKE'S HEATING INC. 1-800-446-4043
GUARANTEED LOWEST PRICES
www.mikesheating.com

Canning Lids Coming Soon to a Store Near You (We Hope)

By Julie Garden-Robinson, Food and Nutrition Specialist
NDSU Extension

"They're in at the grocery store," my friend texted.

I texted my husband.

"They're in," I noted. "Pick up the limit. I probably need six boxes this year."

Later I mentioned on a Zoom call that I had found canning lids.

"Where did you get them?" someone texted.

I told her and she went to the store. They were all gone by the time she arrived.

Who would have thought that canning lids were going to be a hot commodity? They have been hard to find during the pandemic. The shelves with canning supplies were empty in many stores.

I am glad that people are interested in home-preserving food. I hope the lids weren't being used widely for crafts.

We all need to be responsible buyers and not stock up for the next few years. Let's spread the supply around and buy only what we need at present.

When I found some boxes of jars with lids, I bought a couple of boxes. Now I have a lot of jars. I hope my garden is very productive because I am equipped.



Continued on page 14

Continued on next page



We proudly salute all of our

HOMETOWN
HEROES

Thanks for all you do for our communities!



www.redriverbank.com



300 2nd Avenue West • Halstad, Minnesota 56548 • 218.456.2187
114 Mill Street North • Fertile, Minnesota 56540 • 218.945.6171



NOW AVAILABLE AT TRAILL FEED!

EZ COVER REMOTE BIN CAP



NO MORE CLIMBING GRAB BINS TO OPEN OR CLOSE THE CAP



CABLE OPERATED SPRING LOADED LATCH AND HINGE



KEEPS CAP CLOSED EVEN IN STRONG WINDS

- COMES COMPLETE WITH 30' OF 1/8" CABLE AND HARDWARE
- CAN BE SET IN VENT POSITION FOR AERATION FANS
- HEAVY MOUNTING RING MAKES INSTALLATION VERY EASY
- FOUR SIZES AVAILABLE
18" - 24" - 27" - 32"

BALE FEEDER

STURDY BALE FEEDER IS ONE PIECE CONSTRUCTION, ELIMINATING ALL BOLTS



BOTTOM PANEL CONSISTS OF 18 GAUGE STEEL
FRAME IS 1 1/4" 11 GAUGE TUBING
FEEDERS ARE 50" HIGH
EXTRA TUBULAR BRACE BETWEEN BOTTOM AND CENTER RING



ROUND FEEDERS ARE 7 1/2" IN DIAMETER - 16 OPENINGS
SMALL OVAL FEEDERS ARE 4 1/2" x 9" - 16 OPENINGS
LARGE OVAL FEEDERS ARE 7 1/2" x 13" - 24 OPENINGS

COMPARE THE QUALITY OF THIS FEEDER WITH ANY OTHER ON THE MARKET!



Traill Feed, LLC

724 1st St. NE

Hillsboro, ND 58045

Zach Grothmann 701-430-9365

Kevin Grothmann 701-430-9367

We have been assured by a major manufacturer of lids that it is working hard to have the supplies in place by canning season.

Many of us grew up with home-canned food. Maybe you have seen some of the "antique" jars or lids that your parents or grandparents may have used.

Unfortunately, people were grabbing the antique lids and trying them out. Others were reusing lids on commercial jars. We do not recommend doing either of those things.

Use the antiques for room decor or crafts, not preserving food.

Jars can be used again and again, as long as the rims are not chipped and the jars are not cracked or otherwise damaged.

Metal canning lids with the sealant under the lids can be used only one time to preserve food. The metal rings can be used multiple times.

I know we do not like to waste things. If the lids aren't damaged, you could reuse the metal lids in crafts. I have seen some nifty garden markers made from painted reused lids, for example.

Some reusable lids are available with thin rubber gaskets. They have not undergone the level of testing and research as the metal lids. You might see more seal failures as a result.

Here are some tips about lids and canning in general.

Follow the manufacturer's directions for preparing lids. Traditionally, lids were simmered or boiled prior to

applying to jars, but this generally is not the case now. Check the directions on the lid package or manufacturer's website.

Always wash and rinse lids and bands prior to use. Do not use a dishwasher to clean the bands because this can increase the risk of the metal pieces rusting.

Leave the proper head space. The unfilled space above the food in a jar and below its lid is referred to as head space. Each home-canned food product has a specific recommendation for the depth of the head space. For example, sweet spreads should have a head space of 1/4 inch.

Clean the jar rim (sealing surface) prior to applying the lid. Food residue trapped on the jar rim can cause seal failures.

Place the metal screw band over the flat lid and apply fingertip tight. In other words, place the screw band on the jar, turn it just until you feel resistance, then turn the band one-quarter turn more. Screw bands that are applied too loosely or too tightly can cause jars to not seal properly.

After processing, remove jars from the canner and allow to cool 12 to 24 hours undisturbed. Do not retighten screw



Julie Garden-Robinson, NDSU Extension food and nutrition specialist (NDSU photo)

bands. Once jars are completely cool, check for the seal. Removing the screw bands for storage is a best practice. When removed, washed, dried and stored in a dry area, screw bands may be used many times.

If your garden is bountiful with vegetables, be sure to follow the current guidelines. Great-grandma's recipes may not be safe with more recent varieties of vegetables. They may be less acidic because of the changing preferences of our palates.

Use a pressure canner and current U.S. Department of Agriculture processing guidelines to can low-acid foods such as vegetables and mixtures of food.

Acidify tomatoes with the recommended amount of bottled lemon juice or citric acid prior to canning (1 tablespoon of bottled lemon juice per pint of tomatoes; 2 tablespoons per quart). Be sure to process the tomatoes for the recommended time.

Use research-tested salsa recipes and don't alter ingredient proportions. If you create your own salsa and want to preserve it, freezing it is the safest option.

Seal jams and jellies with a regular canning lid (not wax) and process in a boiling-water bath for five to 10 minutes, depending on altitude.

Remember that you are a scientist when you are preserving food. If you can't find lids where you live, consider freezing the vegetables or fruits.

Instead of a recipe, I have an invitation for you to explore the bountiful food preservation materials that are available on our website. Want to make strawberry jam? How about canned salsa? How can you freeze your spinach? How do you make fruit leather from various fruits?

See <http://www.ag.ndsu.edu/food> for free, research-tested food preservation resources (canning, pickling, making jams and jellies, drying, freezing).

(Julie Garden-Robinson, Ph.D., R.D., L.R.D., is a North Dakota State University Extension food and nutrition specialist and professor in the Department of Health, Nutrition and Exercise Sciences. Follow her on Twitter @jgardenrobinson)

Nepstad
Oil *Hendrum, Minnesota*
Leroy & Beth Nepstad
Your One Stop Shop For

- Gas, Oil & Propane - Convenience Items
- Groceries - Hardware - Lottery
- Deli with Subs, Pizza, Chicken, Burgers, Tacos and Soft Serve Ice Cream!

CALL US TOLL FREE AT 1-877-821-0160 FOR YOUR FUEL AND PROPANE NEEDS!

Deli Hours:
M-F 10am - 9pm
Sat
3 pm - 9pm

New Location! **Anderson's**
FARGO
3060 D
25th Street S.
701-540-6614

SHOE & TARP REPAIR
Jacket Zippers

Troy has 40 years of experience and is a National Award winning craftsman!

Halstad Mutual
Fire Insurance Company

Phone 218-456-2174
P.O. Box 297 • Halstad, Minnesota 56548

"Serving the area since 1890"
See you local agent for a quote!

Agtron

CONSIGNMENT EVENT

West Fargo

Red River Valley
Fairgrounds
on the West edge
of West Fargo, ND



WEDNESDAY, JULY 28 | 9AM 2021



TRACK & 4WD TRACTORS



COMBINES



MFWD & 2WD TRACTORS & LOADERS



TILLAGE



HEADS



BALERS



SLEEPER & DAY CAB SEMI TRACTORS



TRAILERS

Auctioneers will run multiple rings with live online bidding. There will be no loading assistance until 12:00 PM. Cars and pickups may enter grounds at 11:00 AM for self-loading. Equipment removal by July 30, unless other arrangements are made. Hauling and loading are available. Contact auctioneers for owner information, new consignments, or changes at 701.237.9173 or 800.726.8609. Live online bidding available on major equipment. Registration, terms, & details at SteffesGroup.com.

Please Visit SteffesGroup.com for Complete List, Photos & Details!

INCLUDES: Track & 4WD Tractors, MFWD & 2WD Tractors & Loaders, Combines, Flex Draper Heads, Flex Heads, Chopping & Non-Chopping Corn Heads, Pickup Heads, Other Heads, Header Trailers, Grain Cart, Swathers, Air Drill, Chisel Plows, Field Cultivators, Other Tillage Equipment, Sleeper Semi Tractors, Day Semi Tractors, Box Trucks, Other Trucks, Hopper Bottom Trailer, End Dump Trailers, Detachable, Flatbed, & Implement Trailers, Reefer & Van Trailers, Other Trailers, Sprayers, Sprayer Trailer & Chemical Equipment, Fertilizer Equipment, NH3 Equipment, Balers, Mower Conditioners & Rakes, Seed Tender, Grain Cleaners, Augers & Bin Equipment, Ditcher, Scrapers & Blades, Stalk Shredders, Mowers, Skid Steer Loader & Attachments, Snowblowers, Other Equipment, Pickup & Recreation, Lawn & Garden, Forklift & Shop Equipment, Tanks, Tires, Parts, Farm Support Items



SteffesGroup.com

Steffes Group, Inc., 2000 Main Ave E, West Fargo, ND 701.237.9173

TERMS: All items sold as is where is. Payment of cash or check must be made sale day before removal of items. Statements made auction day take precedence over all advertising. \$35 documentation fee applies to all titled vehicles. Titles will be mailed. ND Sales Tax laws apply. Canadian buyers need a bank letter of credit to facilitate border transfer. Scott Steffes ND81, Brad Olstad ND319, Bob Steffes ND82, Max Steffes ND999, Justin Ruth ND2019

Timed Online Farm Estate Auction

OPENING THURS., JULY 22, 2021 10:00 A.M.

CLOSING THURSDAY, JULY 29, 2021 / 10:00 A.M.

DEAN: PHONE 218-201-0622 / PHONE JOHN: 218-201-0524

Inspection Dates:
Thurs. July 22nd
Sat. July 24th
8:00 a.m. -
5:00 p.m. or by
appointment

Load Out:
Fri., July 30th
Mon. August 2nd
8:00 a.m. -
5:00 p.m. or by
appointment

Main Event Auctions presents A Premiere Property and Real Estate AUCTION!

Other than the Real Estate
**ALL MERCHANDISE SOLD TO THE HIGHEST
BIDDER REGARDLESS OF PRICE
LESS THAN 3 MI FROM BEMIDJI ON
US HWY #71 SOUTH!!**

**MAKE SURE TO LOOK AT 50 PICTURES OF THIS PROPERTY
@ www.maineventauctions.com Look at the Munz auction
SATURDAY JULY 17th, 2021 10 a.m. and 2 p.m.**

The general merchandise auction will start at 10 a.m. and the Real Estate Auction will start at 2 p.m.
Location: 50743 US Hwy #71 South Bemidji, MN 56601
Parcel ID# in Hubbard County MN is 11.09.01311
Directions: Take the US Hwy #2 bypass around the South side of Bemidji. go the the East Side of town and take the exit south on US Hwy #71 South. Continue south on US Hwy #71 approx 3 mi to the sale site on the West side of the road.

ROBERT AND BONNIE MUNZ-TRUST SELLERS THE PROPERTY

Ten acres with great Hwy frontage just a few convenient miles south of Bemidji on US Hwy #71. The front of the property is lawn and mostly open, with a winding drive back through the trees to the house and shop. The rest of the property is heavily wooded with mostly hardwoods in Oaks and Maples, Ash, Basswood, Popple and flat ground and trails throughout.
THE HOME COULD BE A 4 BEDROOM HOME!

An attractive modern home, currently set up as a 2 Bdrm 2 bath, could be a 4 bdrm with very little modification. Has large office as well. 2 car attached garage and 32'x50' shop. All on 10 beautiful acres w/hwy frontage.
ABOUT THE SALE

This is an Auction, there are special terms and conditions. Please go to our web for details maineventauctions@yahoo.com or call Darin Lee at Main Event auctions 218-358-1168

BROKER OR SALES PERSON PARTICIPATION STRONGLY ENCOURAGED!

LAWN & GARDEN- Quality riding mowers and garden tractors
EQUIPMENT- Farmall H, Case 930 tractor, Ford 8n and much more
ANTIQUES - A house load of Exquisite antique furnishings, mostly Victorian era

BOAT- 1992 Alumacraft Trophy 170 16.9' Runabout walk-through fishing boat 60 hp Johnson outboard Spartan roller trailer, not shown are extra seats and Minnkota remote control motor, just professionally gone through this spnng.

SHOP- Welders, compressors, tools, woodworking, cutting torch, a shop load of 'em

GENERATORS- Generac Guardian Elite 18 kw home generator propane or natural gas, looks like new inside and about 3 other small generators

FARM- Bush Hog, Plows and more
SCRAP IRON- A large amount of leftover steel from projects and scrap iron

MISC- Many modern household goods, and too much to list here
VEHICLES- 1996 Ford F350 Dually w/ 7.3 Power Stroke turbo diesel 2 wd flatbed looks like an honest 87k mi 5 spd. goose neck hitch very clean inside and out, Chrysler Town and Country Limited 3.8 V6 mi unk, Felling goose neck 14' flatbed trailer, '94 GMC Sierra 2500 super cab 2 wd 112k mi New motor @ 90k Diesel auto, 1985 Mercedes 300D turbo diesel 159k mi 4 dr, 1978 K5 Chevy Blazer plow truck 350 auto 7' Western snow plow.

MAIN EVENT AUCTIONS
DARIN LEE PROFESSIONAL AUCTIONEER LIC # 15-11 218-358-1168
www.maineventauctions.com

AND REAL ESTATE BROKER FOR NORTHERN PLACES REAL ESTATE LIC AN MLS MEMBER #40690631
AT MAIN EVENT AUCTIONS WE MAKE "YOUR" SALE THE MAIN EVENT!

TRACTORS	COMBINES, HEADERS & GRAIN CART	TRUCKS	
<ul style="list-style-type: none"> • JD #9400T, 36" Pads, 20% 4-Hyd., Wht. Package, Star Fire Auto, 6522 hrs. • Ford/NH 9680 ITC Globe, 4-Hyd., VG Firestone 20.8-42" Tires & Duals, 6376 hrs., S#D102882 • Case-IH 2294 MFWD, VG Goodyear 18.4038" Tires & Duals, 5555 hrs. 	<ul style="list-style-type: none"> • JD #9750 STS Combine, 2152 Sep. Hrs., 2913 Eng. Hrs., 30.5-32" Tires, Hopper Topper, S#S691629 • JD #635F Flex Head, S#706082 • Klugman 4-Wheel Header Trailer • Case-IH #1680 Combine, 3348 Eng. Hrs., S#0048900 • Case-IH #1010 24' Rigid Head • Case-IH #1015 12' Head w/Sunde Bean Pickup • Melroe #388 Pickup for Grain • Unverferth #6500 Grain Cart w/ Roll Tarp, S#B2336012 • '97 MacDonn 25' Auto Fold Swather • Versatile #4400 SP Swather w/ Cab & Air 	<ul style="list-style-type: none"> • '95 Volvo Tri-Axle Trk., Cummins, 9-Spd., 22' Strong Box, Roll Tarp, Shows 31,143 mi. • '74 Chev. Tag Axle Tandem C-65 w/18' Knapheide Box, 47,850 mi., One Owner 	
TILLAGE	OTHER EQUIPMENT & MISCELLANEOUS		
<ul style="list-style-type: none"> • Summers 28' Diamond Disk, 9" Spacing, X0369 • Rock Cushion Gangs • JD#960 55' Cult. w/JD Harrows, Dbl. Fold • JD #960 44.5' Cult. w/Herman Harrows • Flexicoil #300B 35' Chisel Plow w/HD Harrows • Older Wilrich 36' Cultivator • IH 6-16" Auto Reset Pull-Type Plow 	<ul style="list-style-type: none"> • Late Model Toreq #11500 Push-Off 11.5 yd. Scraper, "VG", S#3836 • Laser & Tripod • Westfield MK 100-71 10x71' Mech. Swing-Out Auger • Alloway #1410 10x71' Hyd. Swing-Out Auger • Westfield 7x41' Auger w/B&S Engine • Haul-All 2-Comp. 18' Tender • Haul-All Single Comp. Tender • '70s Chev. 1/2 Ton 4x4 w/ Summers 60' Sprayer • 1,000 Gal. Ammonia Tank • 1,700 Gal. Poly Tank 		
AIR SEEDER	EDIBLE BEAN EQUIP.		
<ul style="list-style-type: none"> • Case-IH #ABD50 50' Disk Drill w/3400 Cart, S#001507 	<ul style="list-style-type: none"> • White 8-Row 30" Planter w/ Markers, "Shedded" • H&S 8-Row 30" Cultivator • 8-Row 30" Band Sprayer • Elmers 8-Row 30" Frt. Mt. Bean Nnife, #BD830, S#021952 • Vermeer R23A Dbl. Rake, 		

DONALD NARLOCK ESTATE & DEAN NARLOCK

ONLINE BIDDING WITH PROXIBID AT 10:00 A.M. REGISTRATION AT proxibid.com/rapacz. CUSTOMER SUPPORT: 877-505-7770

<p>MN LIC. #445-01 ND LIC. #208</p> <p>Mick Rapacz AUCTIONEERS ARGYLE, MN</p> <p>218-686-5500 / mick@wiktel.com</p>	<p>LUNCH SERVED - ALL SALES FINAL NOT RESPONSIBLE FOR ACCIDENTS</p> <p>ALL ITEMS TO BE REMOVED WITHIN 7 DAYS</p> <p>CELL: 218-686-5500</p>	<p>TERMS: CASH.</p> <p><small>U.S. Funds. Everything to be sold as-is - no warranties given or implied. Nothing to be removed until settled for. All sales final. We believe all printed descriptions to be correct, and accurate, but we cannot be responsible for errors or omissions in the above listing. Any statements made by owners, clerks, or auctioneers take precedence over any and all advertising. Items will be mailed. Not responsible for accidents.</small></p> <p>MICK AUCTIONEERS/CLERK</p>
---	--	--

ONLINE LISTING: www.midwestauctions.com/rapacz - www.globalauctionguide.com/rapacz

3-July Auction Sales in Northwest, Minnesota

<p>Sat. July 17, 10-AM, Russell Wicklund Estate, Greenbush, MN</p> <p>'47 JD#B, 20' 5th whl Flatbed Trlr, Bldg. Constr. Equipment, Woodworking Tools, 2-12" Planers, Scaffolding, Lund 15' Boat & 35 HP OB, 7'x12' Ice House, 2-Utility Trailers, Dixon #5501 Mower, Shop Equipment & Tools. Foley #360 Saw Sharpener, Air compressors, 16' Alum. Scaffold Planks, Anvil, Drill Press, Chop Saw, 8' Sheet Metal Break</p>	<p>Sun. July 18, 12-Noon, Russell Wicklund Estate, Greenbush, MN.</p> <p>'80 Polaris TXC 340 'Restored' '73 Polaris TX 340 'Restored' '57 Chev 2-DR. Hardtop 'Project' '77 Monte Carlo 'Project' Honda 'Big Red' Antiques & collectibles, Scale # Fire Engines, Cars & Trks. Redlin & Kouba Prints, Gun Safe, & 50 Quality Guns. Ski Doo Cat Cutter, Old Bicycles, Hunting & Pocket Knives, Belt Buckles & Pocket Watches</p>	<p>Thurs. July 22, 9-AM, Farm Retirement, Jim Pederson, Karlstad, MN.</p> <p>JD #4610 MFWD w/640 Loader & Grapple, JD #8640, JD #4440, JD #4630, JD #4020, Versatile #835, '94 IH 2300 TYS Tandem Trk. '81 Chev. Tandem Trk., JD #9610 Combine, JD #930 & #925 Flex Heads, 925 Rigid head, Tillage, 40' JD #9350 Drills, 2-Bathing Mowers, BIL HD Ditching Blade, Eversman 6-YD. Scraper, Brandt #5000 Grain Vac. Shop Equipment & Tools.</p>
--	--	--

Complete Listing & Photos on
midwestauctions.com/rapacz
Mick Rapacz Auctioneers, Argyle, MN.
218-686-5500

Wild Meets Mild

Encounters with bears much more common in the Valley

By Ley Bouchard

How many of us spent our childhood playing along the Red River of the North in all the seasons? In summer heat, when the waters are low, the Red shows us the sandbars on which we can literally walk across the river from the Minnesota side to North Dakota. In the winter we can sled down the steep slopes onto the frozen solid river bed. We fish for catfish or bullheads year round! I never did see a bear along the river in all the years I played there. That has changed.

“Bears have been a presence in NW Minnesota since the mid-1990s” said Andrew Tri, Andrew CWT®, CWB®, Ph.D., Acting Bear Project Leader, Minnesota Department of Natural Resources. “They have been slowly expanding west and their populations seem to be thriving. In 1995, there was a statewide bear food failure (not a berry or nut to be had in most of the state); bears first started to be seen in Marshall County, moving out into the agricultural lands, and they found the rich forests on the glacial beach ridges in the area. These forests have a lot of oak, hazel, and berries (at least much more than the swampy country to the east) and are in close proximity to agricultural crops, so the bears stayed and have thrived. At first, it was only male bears wandering out west, but now there are females with cubs, which are required to establish populations. The largest bears in the state are found in NW Minnesota because of the rich food sources there. Over the last decade or so, we have been getting more and more reports of bears in the Red River Valley. The bears likely follow the patches of forest or the river and creek corridors west and establish wherever there is enough food and people tolerate them. The other reason people have been so quick to see an increase in bears in this part of the state is that there is a lot more open landscapes than in the forest. When I first started working in NW Minnesota (Thief Lake WMA in the summer of 2010), it was crazy how much a black bear stands out in an ag field or willow swamp. The roads in the area are on high ground and you can see a long way, making bears all the more visible.”

“We were laying on the couch when suddenly these two black ears just kinda started slowly coming up,” said Cassie Aronson of rural Hendrum, MN. “At first I thought I forgot to let one of my dogs in, and yea, I would let them in later. Then the head came up and it was not a dog. I started screaming, BEAR! I jumped up, went to the window, and it was just walking right through the yard. By the time I grabbed my phone--we have a dike around the yard--so he was a few feet away--he walked right through the yard. The dogs were barking, nothing phased it, it didn’t turn its head, it just mosed on through.”

Aronson lives rurally, east of Hendrum, near the Wild Rice River. “I sent the pics to Bob Berg who grew up on this farm and he said they never saw a bear there,” continued Aronson. “They have trail cams set up, too. In the summer of 2018 he caught a little brown bear near his tree stand across the field from us, otherwise, he said, there’s never been a bear out here.”

“Black bears used to occur in the Red River Valley in the early settlement days (as did the occasional grizzly bear, but grizzlies were wiped out by 1900 in the area), but there weren’t populations of black bears until the late 1990s or 2000s,” explains Tri. “Of course, there was always the occasional bear wandering out of the forest, but sightings are regular in the RRV now. The valley has lots of good forest on the old beach ridges (the Pembina ridge and wagon cart way), abundant agriculture (changes in corn varieties mostly; a few decades ago, we didn’t have <90 day rotation corn and now it’s everywhere), and forested edges along creeks and rivers that drain west to the Red River (e.g., Middle River, Tamarac River, South Branch Two Rivers, Snake River, etc.) Some bears have even headed into ND as well. We are keeping better track of these data right now. If people want to report bears that they see in the RRV, they can do so on our webpage.” <https://www.dnr.state.mn.us/hunting/bear/bear-sightings.html>

Continued on page 19

A black bear recently visited this farmstead near Hendrum, MN along the Wild Rice River

Photo courtesy of Cassie Aronson



\$1000 Hiring Bonus!



BARRICK

FAMILY FARM

WE'RE HIRING 20+ EMPLOYEES FOR A VARIETY OF POSITIONS NEAR ADA AND FOSSTON, MN

GREAT BENEFITS!

- State-of-the-art, clean working environment
- Health Insurance and HSA
- Paid time off and holidays
- Flexible work schedules
- Opportunities for growth
- Retirement matching
- And more!

APPLY TODAY AT
BARRICKFAMILYFARM.COM

FARM MACHINERY | CONSTRUCTION EQUIPMENT
BUSINESS LIQUIDATIONS | LAND SALES



USED EQUIPMENT VALUES ARE AT ALL TIME HIGHS..... IF YOU'RE PLANNING RETIREMENT ...OR EVEN HAVE A FEW ITEMS YOU NO LONGER NEED ...OR CAN TRADE UP....WE HAVE SOLUTIONS FOR YOU!!

Decades of Knowledge, Steady Innovation and Top Results

We specialize in converting your agricultural land, farm, construction, or commercial assets to working or bankable capital. Whether you have land or equipment to sell, you'll have our promise of commitment and attention to detail.

WHETHER ITS YOUR OWN AUCTION, REGULAR CONSIGNMENTS OR MONTHLY ONLINE EVENTS..... FIND US AT RESOURCEAUCTION.COM; CALL YOUR LOCAL REP: ANDREW JOSSUND 701-367-3627



RESOURCE AUCTION

Dennis Biliske, Auctioneer

Live on-site with simulcast online auctions or timed online bidding
resourceauction.com



2702 17th Ave. S, Grand Forks, ND 58201 | 701-757-4015



Richards Oil & Propane

Ada, MN • 218-784-2941

"Serving the Red River Valley for 50 Years!"

We are proud to provide area farms, homes and lake properties with all their propane, gas, diesel and lubricant needs

I asked Dr. Tri about tracking bears in the RRV. “We don’t have any bears with collars in NW Minnesota anymore. We took off the last collar in 2019. There are some bears still out there with ear tags, but less than 10. Bears in the area have some of the largest home ranges in the state. They don’t really move in one single direction. Males at age three take off for permanent dispersal (the current understanding as to why this occurs is as a hedge against inbreeding) and can go hundreds of miles before they find a new, permanent home. Females have smaller home ranges and tend to remain local at age three and up; however, we do sometimes get big movements of females. We had one instance where a bear from New Maine Township went all the way to Zippel Bay in a dispersal event and has remained there ever since.”

What causes the movement of bear or large mammal populations? Dr. Tri responded: “We don’t know why, exactly, but as with most things, it’s likely driven by habitat. In this case, bear food production was poor where these bears were (likely in the Beltrami Island State Forest area) and they left to find somewhere with food. Males typically show up first. After a while, females show up and then a population starts. Males sometimes leave their homes for better food, to find mates, or to establish a new territory where there is less competition from other male bears. Bears in Minnesota migrate each fall. They follow the food production (typically south and west) to find acorns. We think that this helps redistribute bear populations across the landscape, but given that they are already long distance migrators, it seems it would be relatively easy for a bear to set-up shop in empty habitats along the RRV initially and thrive.”

Encountering a bear may be terrifying and thrilling at the same time. “It’s very situation dependent, but some good tips can be found on our website,” said Dr. Tri. “While it may be startling, it is also a pretty unique experience for most Americans. Bears in much of their range were wiped out or nearly wiped out. If you happen to encounter a bear from far away and are comfortable about it, take some time to take in the moment. Bears are a pretty iconic species and are fun to watch. They are less fun to encounter when people do not secure attractants (anything that bears would consider food such as garbage, birdseed, dog food, chicken feed, grills that are not cleaned or have a full grease trap, etc). It’s better to play it safe and keep a clean camp or clean yard than to have to deal with bear issues down the road.”

Aronson saw the bear in her yard May 30. “We have six dogs, one in the house, barking out the window like crazy! The only thing we could think of that’s different is we have our own dumpster now, but it’s on the opposite side of the yard. No bird feeders, nothing that would attract him. I don’t even have a garden this year. I have rock landscaping around the house and he was in the rock, right next to the living room window. It wasn’t a huge bear, but it wasn’t a cub, a few years old at least. It was scary. For the first couple weeks, it was really scary going out at night to let the dogs out, every little sound or movement,” Aronson gasped.

North Dakota doesn’t offer a hunting season on black bears, so they can’t be shot unless they pose a threat to people or property, and anyone who kills a bear must report it to the Game and Fish Department. Minnesota

Continued on page 20

How to avoid bear encounters near your home or cabin:

- Avoid attractants like bird seed in feeders,
- Store trash securely and place for pickup the morning and not the night before, wash your containers often to reduce odor
- Store meat, food scraps or fish entrails in the freezer until trash pickup day

Information Courtesy of BearWise® | www.BearWise.org <https://bearwise.org/bear-safety-tips/bear-encounter/>

How to behave if you see a bear

- Black Bear Attacks Are Very Uncommon
- Black bears rarely become aggressive when encountered. However, it’s best to avoid bear encounters, and to know what to do if an encounter happens.
- “Know what to do when you see a bear. NEVER run from a bear. Don’t approach a bear – just quietly move away and leave the area. However, if a bear does approach you, make yourself look big, make loud noises, clap your hands, and continue to back away.”

Jaime Sajecki, Black Bear Project Leader, Virginia Department of Game and Inland Fisheries

If you encounter a bear...In a building or by a dumpster

- Give the bear a clear escape route (do not corner it).
 - Leave any doors open as you back away from the bear.
- Do not lock the bear in a room.

...In Your Backyard

- From a safe distance, make loud noises, shout, or bang pots and pans together to scare away the bear.
- When the bear leaves, remove potential attractants such as garbage, bird seed, or pet food.
- Ask neighbors to remove attractants.
- Check your yard for bears before letting out your dog.

...In The Woods

- If you see a bear before it notices you: stand still, don’t approach and enjoy the moment. Then move away quietly in the opposite direction.
- If you encounter a bear that’s aware of you: don’t run; running may trigger a chase response. Back away slowly in the opposite direction and wait for the bear to leave.
- Back away only when the bear stops its approach.
- Make yourself look bigger by raising your arms and jacket, and/or standing on a rock or stump.
- Yell “Hey bear” loudly.

...Makes Contact With You

- FIGHT BACK with anything at hand (knife, sticks, rocks, binoculars, backpack or by kicking).
- DO NOT play dead
- Bear Spray *Reprinted from: www.dnr.state.mn.us/livingwith_wildlife/bears/encounters.html*



does have a hunting season with quotas determined by region and permits required.

Much historical and current information is available on the DNR websites including more of the study referred to in this article.

MN DNR information excerpts from the following publication:

The Importance of Radio-collared Bears (and why we ask hunters not to shoot them)

By Dave Garshelis, Bear Research Scientist, Minnesota DNR

Minnesota is lucky to have one of the longest, DNR-run bear research programs in the country. The core of this research program is radio-collared bears. Because long-

term research on individual collared bears is so crucial to management, we ask hunters not to shoot collared bears.

- Research Began in Early Days of Minnesota's Bear Management
-
- 1971: Bear classified as big game species: bear or deer license required to hunt.
-
- 1978: Bear harvest exceeds 1,000.
-
- 1979: Bears could only be taken during designated bear season (no longer during firearms deer season).
-
- 1981: Bears could only be hunted with a bear license. Start of DNR research project with radio-collared bears

- 1982: Start of lottery-based quota on bear licenses (5 areas with separate license quotas).
-
- 1987: Establishment of no-quota zone along fringe of range.

Litters of 3 cubs are the most common (55%) across the state, but 2-cub litters are more common than 3-cub litters in Voyageurs National Park. About 5% of litters are a single cub (mainly a bear's first litter), and about 5% are litters of 4 or 5 cubs. About 19% of cubs die in their first year of life. Male cubs have a higher mortality than females, because males tend to be more adventurous, and die in more accidents. While the sex ratio of cubs starts out slightly favoring males (51% overall), by 1 year of age there are more (52%) females. Despite this, about 70-75% of 1-year-olds that are shot by hunters in the fall are males (because they travel more and are more inclined to visit baits).

RED, WHITE & BLUE

SALE

Stock up on Sizzling Savings!



Lasko
22⁹⁹
20" Box Fan
(462051)



34⁹⁹
FEIT Electric
30' Outdoor String Light Set
(158808)

\$5 Mail-In Rebate
with purchase of 5 Quarts

FINAL PRICE 1⁹⁹ EACH



Supreme Motor Oil
Available in SAE 30, 5W-30, 10W-40, 20W-50, 5W-20 or 10W-30
(635425), (635516), (635540), (638056), (948695), (635524)



Valley General Store • Halstad, MN • 218-456-2148

HARDWARE HANK®

www.valleygeneralhalstad.com

Newest Toy at Zippy Rents!

This dozer blade with wheels out front makes a skid steer into a tiny maintainer.

It does take a little getting used to but you can level dirt or stone, or dig ditches or clean them out. Use it on your skid steer or rent one of ours.



It does take a little getting used to but you can level dirt or stone, or dig ditches or clean them out. Use it on your skid steer or rent one of ours.

Zippy Rents

Awesome Equipment

Highway 75 - Hendrum, MN - Call Paul at 218-861-5104

**HERE ARE JUST A FEW OF
THE ACTIVITIES HAPPENING
AT THE REUNION!**

FRIDAY

**4-8 PM: REGISTRATION
@ HALSTAD LUTHERAN CHURCH**

9 PM-1 AM: DANCE @ SCHOOL GROUNDS

SATURDAY

**8-11 AM: FREEWILL BREAKFAST
@ HALSTAD LUTHERAN CHURCH**

**9 AM-12PM: REGISTRATION
@ HALSTAD LUTHERAN CHURCH**

**1 PM: NOSTALGIC CAR SHOW
@ WEST SIDE OF SCHOOL**

4 PM: PARADE @ DOWNTOWN HALSTAD

**7-8PM: REUNION PROGRAM - "DANCING
THROUGH THE DECADES" - SCHOOL GYM**

9 PM-1 AM: DANCE @ SCHOOL GROUNDS

SUNDAY

**11 AM: ALL-FAITH SERVICE
@ HALSTAD LUTHERAN CHURCH**

*For more information and to
register for the fun, scan here:*



**The Pirate-Panther
All-School Reunion
is happening
July 23-25, 2021 in Halstad!**

*There are lots of events for
alumni and the community,
including a parade!*



**Today and everyday,
we thank you.**



From first responders to teachers, nurses to local volunteers,
you are our heroes. Your selfless dedication to our community is felt
every day. We are proud to honor you and the work you do.



www.nwbanks.com



Cambria® Quartz
Slab Gallery

806 NP Ave
Downtown Fargo

**TOPS MANUFACTURED AT
FARGO, ND, PLANT FOR FAST SERVICE!**



701.235.1185

828 NP Ave Fargo, ND 58102
www.fabricatorsunlimited.com

PROVIDING COUNTERTOPS TO YOUR LOCAL DEALERS FOR 35 YEARS!!

**Our area dealers include your local kitchen-bath showrooms, building centers, custom cabinet shops,
lumberyards, flooring stores, tile stores, design centers, woodworkers and many more craftsmen in our industry.**

FEVIG
OIL & PROPANE

- PROPANE
- DIESEL FUEL
- GASOLINE
- HOME HEATING
- MOTOR OILS
- JET FUEL

Fargo/Moorhead - 701-232-4853
 Felton - 218-494-3302 Ulen - 218-596-8825
 Mahnomon - 218-935-2508 Twin Valley 218-584-8601

Thank you hometown heroes!

HALSTAD
 Mutual Fire
 Insurance Company

Halstad, MN - 2178-456-2174

**Hometown
 Heroes**

We salute our community volunteers!

Making A Difference Every Day

**Alton Grain
 Terminal, LLC**
 HILLSBORO, ND - 701-636-5130
 HALSTAD, MN - 218-456-2160

**American Federal
 Bank**
 Ada, MN - Member FDIC - 218-784-7121

**Office Supplies
 Plus**
 ADA, MINNESOTA - 218-784-3880

THANK YOU HOMETOWN HEROES!

NOW ENROLLING

GROW WITH YOUR CHILD!

Call today for more information on our programs and services.

800-201-3461

www.tvoc.org
Tri-Valley
 Opportunity Council, Inc.
Head Start, Child & Family Programs

The Promoter Salutes

H O M E T O W N
HEROES

Thank You
Volunteers For
All You Do For
Our
Communities!

**A Tribute to our
Volunteers Who Make a Difference Every Day!**



Thanks!

For all you do from...

Flom

Insurance Agency

Flom, MN - 218-567-8323

Petry Insurance

Agency, LLC

Ada, MN - 218-784-3391

Flom Region Mutual

Insurance Company

Flom, MN - 218-567-8261

Twin Valley

Insurance Agency, LLC

Twin Valley, MN - 218-584-5163

A Salute to Our Hometown Heroes

We are proud to honor our



We appreciate everything you do to make our communities a safer place to live. Thank you!



700 E. Thorpe Ave., Ada, MN
218-784-4600

Hwy 75 S., Halstad, MN
218-456-2000



203 Albert Ave. E., Fertile, MN
218-945-6141

www.fredriksonfh.com

Special thanks to our Hometown Heroes
from

GEORGETOWN FARMERS ELEVATOR COMPANY



Georgetown, MN
218-236-6661



Perley, MN
218-861-6545

Congratulations to all of our Hometown Heroes!



Fair Meadow Nursing Home
& Assisted Living

300 Garfield Ave SE
Fertile, MN 56540



Website: www.fairmeadowfertile.org

Facebook: fair meadow nursing home and assisted living, fertile, mn

Hometown Heroes

Making A Difference Every Day

THANK YOU HOMETOWN HEROES

for devoting your life to protecting ours



mooreengineeringinc.com



THANK A HERO IN YOUR LIFE

River's Edge
Insurance Agency, Inc.

218.456.2172
RIVERSEGEINS.COM

A Salute to Our Hometown Heroes

Hometown Heroes are Everyday People Who Give Back to Their Communities!

An opinion piece in a major midwest daily newspaper called attention to the fact that, while our military are great national heroes, we have three holidays to honor them. Independence Day, however, offers us the chance pay tribute to other heroes.

It seems to us that Independence Day calls on us to celebrate our local heroes -

Volunteer Firefighters

Whenever fire or other dangerous peril threatens communities all across America, chances are high that volunteer firefighters will be among the first to respond to the siren's call.



EMS

Communities rely on volunteer emergency medical responders (EMR) and emergency medical technicians

(EMT) to provide initial and early personal emergency medical care.

Military

We pay tribute to all military personnel, from every service branch, and from every time period in American History.

Law Enforcement

Our police officers risk their lives every single day. Every day, they wake up in the morning and kiss their wives or husbands and children goodbye, knowing full well that it could be the last time they see them.

Hendrum-Perley Fire & Rescue

Hendrum Fire & Rescue

Mike Smart – Fire Chief
Craig Balvik – Rescue Captain
Paul Luoma, Asst. Chief
Thomas Brownlee
Tim Wheeler
Jordan Smart

Gavin Gill
Skye Gill
Hunter Rudnik
Wyatt Rudnik
Louie Lopez

Perley Station

Michelle Holm
Dennis Hanson
Scott Mangum
Chad Meis

Anthony Burnside
Sarah Ramsey

Felton Fire & Rescue

Felton Community Fire Department

Aaron Belka, Brad Bjerkin,
Nate Dahl, Wes Dahl, Rodney
Dahlsad, Shawn Denenny,
Chuck Hilde, Josh Hilde, Brad

Jensen, John Klevgaard, Ethan
Mabus, Kevin Puhalla, Corey
Steinbach, Cody Wambach,

Colton Wambach, Matt Wierschke

Felton Rescue Squad

Wes Dahl, Thomas Dobrzynski, Marcia Norman, Molly Nuttum,
Ethan Mabus, Michelle Mabus, Cody Wambach

We Appreciate All Those Who Serve Our Communities in So Many Ways. Thank You!

 *Employee Owned*
Thrifty White
PHARMACY

319 West Main Street
Ada, MN
218-784-2434

Store Hours: Monday - Friday: 8:30am - 5:30pm
Saturday: Closed • Sunday: Closed

 *United*
VALLEY
Bank

Our Roots Make Us Stronger
Cavaler, ND • Grand Forks Columbia Road, ND
Grand Forks Downtown, ND • Crookston, MN
Hallock, MN • Lancaster, MN • Argyle, MN
Mahnomon, MN • Twin Valley, MN

 www.uvbank.com 

We salute our Hometown Heroes!

Julin Law Office, PLLC
Cynthia A. Julin, Attorney & Counselor at Law

 *Serving our clients with integrity and respect*

318 East Main, Ada, MN 56510
Office: 218-784-2520
E-mail: cjulin@julinlaw.com



A Salute to Our Hometown Heroes

Members of the Halstad Fire & Rescue

Halstad Fire Department

Charles Aarestad	Matthew Ohm
Josh Anderson	Ryan Olson
Michael Bare	Joshua Poehls
Shane Carlson	Payton Rufsvold
Gaylord Christianson	Isaac Spaeth
Kevin Erickson	Lucas Spaeth
John Hinkley	Chad Tice
Darin Johnson	Randy Westcott
Rick Leiser	Todd Westcott (Chief)
Bron Lucas	Tony Wolff
Justin Nord	

Halstad Rescue Squad

Jesse Arneson
Rachel Arneson
Shane Carlson
Amy Fagerstrom
(President)
John Hinkley
Kathy Mickelson
Ken Mickelson
Darla Moen
Joseph Pickle
Mercy Pickle

Gary Shulstad
David Swenson

Thanks volunteers!

GK Technology
For Agriculture
Halstad, MN

Your source of SOFTWARE for:
Precision Farming, Mapping Services & Drainage Solutions

855-458-3244
gktechinc.com
facebook.com/gktechinc
@gktechinc



Members of the Shelly Fire & Rescue

Shelly Fire & Rescue Squad

David Swenson, Fire Chief	George Swenson
Kym Grove	Lief Swenson
Janet Grove	Elijah Swenson
Gene Dybing	Darla Moen
Curt Crowley	Kylle Stene
Marilyn Whiting	
Ron Cakebread	
Jonithan Sorenson	

Thanks to all of our community volunteers
Valley United C-Store



Highway 75 - Halstad, MN
218-456-2131

We Salute Our Hometown Heroes!



HALSTAD TELEPHONE COMPANY

How To Connect

345 2nd Ave W, Halstad • 218.456.2125

124 E Caledonia Ave, Hillsboro • 701.636.2125

halstadtel.com • 800.457.2125

telephone • internet • cable television

"Proud to be a cooperative since 1904!"

A Salute to Our Hometown Heroes

Thank You to all of Our Community Volunteers



(218) 861-6208

302 Main Street East • Hendrum, MN

**Perley
Community Co-op**
PERLEY, MINNESOTA - 218-861-6561

**Red River Valley
Co-op Power Assn**
HALSTAD, MINNESOTA - 218-456-2139

Members of the Ulen Fire Department

Ulen Fire Department

JAKE ANDERSON
JEREMY BEGG
ROCKY BURNSIDE
ELIJAH DILLON
TIM DORAN
BEN FUGLIE
ADAM FYRE
KELLY JACOBSON
RICK LARSON
DUSTIN LEE
APRIL LEE
BRIAN MAESSE
JOSEPH MOZLEY
ROY SORENSEN
DENNIS STEICHEN

LYLE STEICHEN
KEVIN STEICHEN
ERIC SWENSON
NICK THEIS
SCOTT THEIS
DOUG TOCZEK
GABE TWETEN
ANDREW WANG
CHAD LEWIS

Thank You to all of Our Community Volunteers



Ulen, Minnesota
218-596-8821

Thank you volunteers!



Ben Fuglie - Lesa Hilde

**Auto-Owners
INSURANCE**

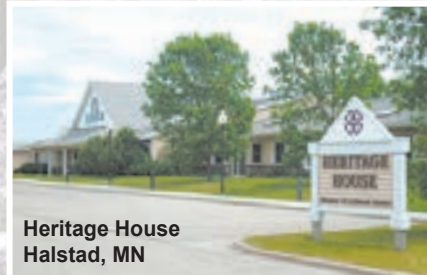
LIFE • HOME • CAR • BUSINESS

**Ulen
Building
Supplies,
Inc.**
Ulen, MN
218-596-8771

“Thank You” to all of our Hometown Heroes!



Halstad Living Center
Halstad, MN



Heritage House
Halstad, MN



Lutheran Homes

A mission of caring for over 50 years

www.HalstadLivingCenter.com

Halstad, MN • 218-456-2105



The Normandy
Twin Valley, MN

Norman County Heating & Cooling

Aaron Ambuehl - Owner

Heating & Air Conditioning

Residential • Commercial

Authorized **RUUD** Sales & Service - We Repair All Brands

Free Estimates



218-556-0349



A Salute to Our Hometown Heroes

Members of the Ada-Borup Fire Dept.

Ada-Borup Fire Department

Ada Fire Department

Steve Petry-Chief
Bruce Visser-Asst Chief
Mark Brownlee,
Lieutenant
Glen Visser-Captain
Scott Erickson-Captain
Josh Mathsen-Captain
Jay Merkens

Shawn Roux
Chris Westcott
Dave Scherfenberg
Michael Sorenson
Blaine Erickson
Nicholas Prothero
Bryce Jossund
Justin Kaste
Sam Visser

Eric Delong

Borup Station

Randy Pallum-Chief
Myron Pallum
Duane Hushagen
Taylor Myers
Justin Wilhelm

Valley Vision Clinic

Ada, Minnesota
218-784-4091

Insurance Brokers of MN

Ada, Minnesota
218-784-2588



Thank You Community Volunteers!

ADA BODY SHOP & GLASS

610 East Main St. • Ada,
MN 56510 - 218-784-2531

Free Estimates

- Collision Repair & Refinishing
- Windshield & Glass Installation
- Tire Sales • Frame Straightening
- Suspension Repair

We Proudly All of
Salute Our Home
Town Heroes!

DAN NESS SALES

Ada, Minnesota
218-766-6109



Breeding Confidence

Thank You to All Our Area Volunteers!



Richards Oil & Propane

Ada, MN • 218-784-2941

Wes's TRUCK REPAIR

DOTs • Truck & Trailer Repair

Still selling
auto parts and
accessories!

2738 Hwy 200 E
Ada, MN 56510

Come by for the
best prices on
filters and more!

(218) 790-1756

We salute our Hometown Heroes!

BENNETT HOUGLUM AGENCY

Specializing in All Risk Crop and Hail Insurance

211 W. Main St. - Ada, MN 56510 - 800-784-2106

705 Hwy 75 N. Moorhead, MN 56560 • 877-233-8139

houglum@loretel.net

John Germolus - 701-367-8639 - MN Lic.#8381

Wayne Lee 701-361-8158 MN - Lic.#1012390

Marisa Carlsrud 218-784-8530 - MN Lic.#20572772

A Salute to Our Hometown Heroes

Members of the Climax Fire Department

Climax Fire Department

Jim Litch - fire and rescue
Todd Evenson - fire
David Rye - fire & rescue asst.
Chief Bryan Nettum-fire & rescue
asst Chief.
John Vraa - fire and rescue
James Evitts - fire and rescue
Brain Evenson - fire and rescue
Howard Nettum - fire
Karla Chandler - fire
Jeremy Chandler - fire

Casey Carl - fire
Jerome Rarick - fire and rescue
Beth Rarick - fire and rescue
Donny Abentroth - fire
Michael Nesvig - fire
Dean Gunderson - fire
Scott Gunderson - fire
Tracy Gunderson – fire
Dylan Evitts - fire
Chad Gunderson - fire
and rescue Fire Chief

We salute all of our area volunteers!



VINELAND HUNTSVILLE MUTUAL
INSURANCE COMPANY



Organized to serve the policyholder since 1884

PHONE: **218-857-2328** WWW.V-HMUTUAL.COM
PO Box 29 - Climax, MN 56523 - v-hmutual@rrv.net

Members of the Nielsville Fire Department

Nielsville Fire Department

Nielsville Fire Department
Donald Blasey – Chief
David Vraa

Tom Schreiner
Leslie Palm
Scott Abentroth

Salvador Vargas
Jeremy Pierce
Mike Burd

Members of the Gary Fire & Rescue

Gary Rescue Squad

EMT's – Bridget Sather & Monica Lisburg.

First Responders – Linda Engen, Kim Knutson, Kristi Engen, Carrie Heisler, Paige Gunderson, Al Clausen & Missy Netland.

Gary Fire Department

Buck Engen- Chief
Byron Thronson
Lynn Thordal
Dalen Thronson
Brian Chisholm

Ben Ramstorf
Ray Gunderson
Dan Pinske
Bryan Thronson
Joe Heisler

Nathan Sather
Nick Pederson
Barent Thronson
JB Benefeld
Jake Liebl

Blaine Thronson
Mark Juarez
Terry Mackner
Trent Prestegord

Randy's Body Shop

Borup, Minnesota
218-582-3337

Bitker, Inc.

Halstad, Minnesota
218-456-7467

Gary State Bank

Gary, MN - 218-356-8255
Member FDIC

A Salute to Our Hometown Heroes

We are proud to support our



HOMETOWN HEROES



Used Superstore



701.786.2146
or toll free at
877.346.5396
942 3rd St SE,
Mayville, ND



701.524.1200
or toll free
800.346.5398
700 Lincoln Avenue S
Finley, ND



701.524.1200
or toll free
800.346.5398
700 Lincoln Ave S,
Finley, ND
POLARIS

289702

VISIT CHRISTIANCARSONLINE.COM FOR ALL YOUR VEHICLE NEEDS



701.797.2461
or toll free
800.950.4517
1002 Rollin Ave SE
Cooperstown, ND



218.281.1338
or toll free at
800.584.9230
1375 Hwy 2 E
Crookston, MN



800.531.6166 or
218.945.6166
Hwy 32 North
Fertile, MN 56540

A Salute to Our Hometown Heroes

Members of the Fertile Fire Department

Wolfe Clark (Fire Chief) 26 yrs
Jason Haas (Assistant Chief) 19 yrs
Sam Finseth 11 yrs
Vern Anderson (Secretary/Treasurer) 33 yrs
Timmy Oistad (Gaming Manager) 23 yrs
Tod Dufault (Captain) 20 yrs
Travis Jensrud 18 yrs
Aaron Broden 16 yrs
Nathaniel Messick (Captain) 14 yrs

Travis Fuchs 13 yrs
Aaron Bakke 11 yrs
Brian Grunhovd 9 yrs
Stanton Wang 8 yrs
Reid Jensrud 8 yrs
Tyler Erickson 6 yrs
Dustin Kalinoski 5 yrs
Jeff Haaven 4 yrs
John Revier 3 yrs

Elijah Clark 3 yrs
Shane Fredericks 3 yrs
Travis Stene 2 yr
Chris Peterson 2 yr
Isaac Larson 2 yr
Cory Ystenes 1 yr
Damian Gudvanger 1 yr

Family Owned and Operated
VERN'S
CARPET

Specializing In:
• Carpet • Ceramic Tile • Hardwood
• Hunter Douglas Window Blinds
• Laminate • Sales & Installation

202 N Mill St. • Fertile, MN
(218) 779-8094
www.vernscarpet.com

Members of the Buxton Fire Dept.

Alan Watson*
Andrew Jabs
Andy Mack
Ben Hershey*
Christine Schmidt
Craig Moen
Dan Fuglesten
David Knudsvig*
Gary Fuglesten

Greg Troftgruben
Jeremy Larson
Jeremy Billings*
Josh Ensign*
Mike Smith
Mike Frey
Mitch Adams
Nate Ackerland
Patrick Boorman

Paul Mueller*
Scott Erdmann
Spencer Endrud
Warren Brend*
Kirklin Thomas

First State Bank
Today. Tomorrow. Together.

www.firststatebanks.com

Buxton 701-847-2600 Thompson 701-599-2600 Grand Forks 701-746-7766 Mayville 701-788-9030 Portland 701-788-3791

Member FDIC

(All are members of the fire department. Medical first responders are noted with an *)

We Salute All Area Volunteers!

FARMERS UNION OIL COMPANY
P.O. Box 116, Buxton, ND 58218
Office: (701) 847-2550 • Fax: (701) 847-2551
fuoc@midconetwork.com

CENEX

Special Thanks to all of those who volunteer their time for our communities!



Opdahl's Donuts

Fresh Donuts, Cookies, Breads and more!

Just like Grandma used to make!

104 Washington Ave. NW
Fertile, MN 56540

218-945-6400

A Salute to Our Hometown Heroes

Members of the Hillsboro Fire Department

Hillsboro Fire Department

Hillsboro Fire & Rescue	Todd Carlson
Jamie Reed Fire Chief	Scott Olsen
Jake Rust 1st Asst. Chief	Chris Redland
Bob Wilson 2nd Asst. Chief	Dave Mueller
Matt Miller Sec/Tres.	Dereck Mooney
Dave Sather	Chris Mueller
Tom Olsen	Cody Kritzberger
Dan Christianson	Chad Kritzberger
Ray Weber	Mark McLean
Marty Iverson	Blake Sorum

Brandon Abell
Dan Ulrich
Tim Kelley
Zachery Zander
Marcus Miller
Dontray Nelson
Avery Knight

We Salute Our Hometown Heroes!

SkyTractor
LLC



16285 5th St NE, Hillsboro ND 58045

Email: skvtractor@rrv.net

(701) 636-5880

Thank You Volunteers!



110 6th St. Sw - Hillsboro, ND
701-636-3000
www.heftyseed.com



WE SALUTE OUR HOMETOWN HEROES!!

Dakota
Heritage
Bank



Hunter • Hope • Galesburg • Grandin
Hillsboro • Gackle • Streeter • Jud • Harvey
Red Lake Falls

www.dhbanknd.com



FDIC

Thanks to all of our community volunteers



Hillsboro, North Dakota
636-4842 or 800-450-4842



Buyer of Quality
Malting Barley

We are proud to salute all of our
community volunteers!



Hillsboro,
North Dakota

Taft Elevator
Darrel Miller
800-898-4481

Shakopee,
Minnesota

A Salute to Our Hometown Heroes

Members of the Grandin-Gardner Fire Department

Grandin-Gardner Fire Department

Brady Backstrom
Mark Backstrom
Fred Bohjanan
Jared Elliott
Jerry Gerszewski
Curtis Kalash
Tyler Kent

Rick Kent
Konner Kylo
Ross Lockhart
Jeremy Magnuson
Jon McSparron
Joel Porter
Eric Rensvold

Louis Rosenau
Tim Satrom
Reggie Tate
Doug Tate
Jamie Winterquist
Kinzie Wallgren
Mark Schultz

Jesse Hayden
Bryce Sorsen
Joey Lende
Steve Stavenes
Tristan Walsh

Members of the Twin Valley Fire & Rescue

Twin Valley Fire & Rescue

Eric Begg
Paul Bekkerus
Taylor Bennefeld
Karen Bolton (RSC)
Marcus Coyle
Joseph Diepenbrock
Brenda Dobmeyer (RSC)

Nathan Dobmeyer (FR/RSC)
Jason Douville (RSC)
Benjamin Fall
Justin Gall
Crystal Hegreberg (RSC)
Mitch Hoekstra
Mike Lampton

Rueben Mastin
Joshua Matteson
Peter Pazdernik
Joseph Peterick
Dusty Stueness
Shaun Syverson
Terri Thornton (RSC)

Kraig Thornton
Kurt Thornton
Dean Thorson
Daniel Wilsey (RSC)

Centrol, Inc.

Twin Valley, MN - 218-584-5107

Norman County Soil & Water Conservation District

P.O. Box 60 - Twin Valley, MN 56584

Phone: 218-584-5169

Fax: 218-584-5667

www.nwmnswcd.org

Thank You to all our Community Volunteers!



We're your local, independent agent!

Crop Hail Farm Business Auto Home Life Health & More!

Devils Lake | Hillsboro | Hope
Mahnomon | McVile | Towner | West Fargo

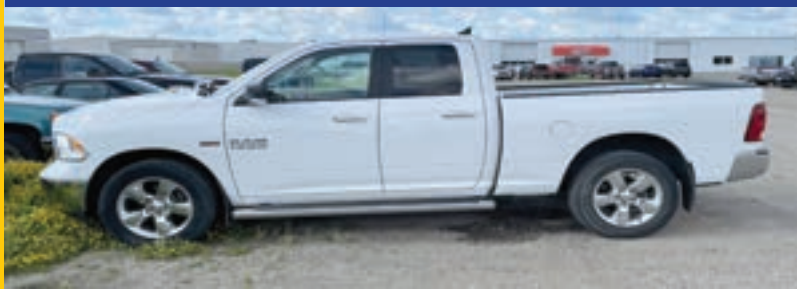
ihryinsurance.com

Ihry Insurance is an equal opportunity provider

1-800-726-7929

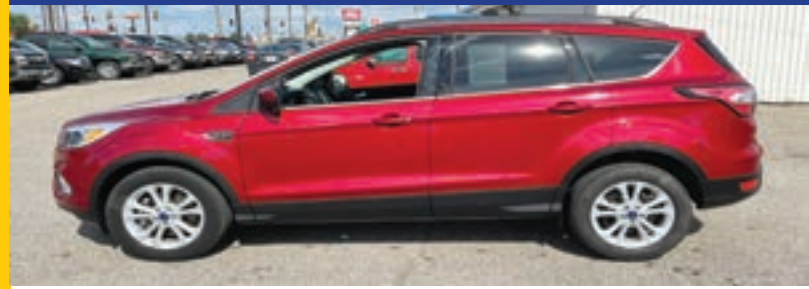
**We are happy to pay tribute to all of the
great volunteers in our area towns!**

2013 Ram 1500 4x4



Extra Nice, Cloth Interior, Hemi Power, Quad Cab, Short Box, Chrome 20's With New Tires, 128K, Coming Soon
Only \$24,900

2018 Ford Escape 4x4



SE, Only 26,114 Miles, Factory Warranty, 1.5L EcoBoost, 6 Speed Automatic, Safe & Smart Pkg, Gorgeous Ruby Red **\$25,325**

2010 Dodge Journey



\$1,570 Down \$284.67 For 38 Mo.*
Fancy RT, 7 Pass, AWD, Leather, Sunroof, Bluetooth, 3.5L V6, Kinda Cute SUV, Come See **\$9,770**

2012 Chevy Suburban



A 4x4, Loaded, LT, Sunroof, Heated Leather, DVD & More! Good Looker, Black On Black, Selling Cheap Due To Miles Over 250K, Cheap Cheap At **\$16,500**

CREDIT CHALLENGED? WE CAN HELP!!!



Basic Credit Requirements*

- Down Payment (Your Trade Counts)
 - Ability To Get Full Coverage Insurance
 - 6 or More Months On The Job & At The Same Residence
 - Other Terms & Condition May Apply
- Tax, title, Lic & Fees, Not Included**

CHEREN AUTO

4050 Main Ave Fargo 701-239-9999

2013 Ford Escape



\$2,900 Down \$290.37 For 42 Mo.*
2.0L EcoBoost Economy, 4x4 Safety, Cold Air, Nifty Cloth Seats, SE With Aluminum Wheels, "One Cute SUV" 184K Hwy **\$11,900**

2006 Dodge Charger



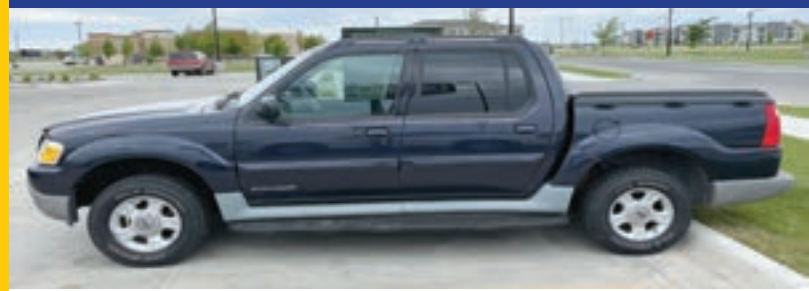
\$1,450 Down \$269.59 For 24 Mo.*
Sporty SXT, 3.5L High Output V6, Leather, Sunroof, Power Seat, Etc. Neat Wheels, Only 171K **\$6,850**

2010 Chevy Long Box



Ext Cab, Silverado LT, 4x4, Only 84K, HD Cooling Pkg, Engine & Tranny, HD Suspension, HD Trailing, 5.3L V8, Power Cloth Seat, 6 Passenger, 1/2 Ton, Looks New **\$19,987**

2001 Ford Sport Trac



\$1,777 Down \$237.46 For 32 Mo.*
Explorer, 4 Door Pickup, 4x4, XLT, 4.0L V6, Auto, Air, Cruise, Power, 167K, New Tires, Neat Looker **\$7,777**

*Down Payment + Tax, Lic., Doc Fees, Cash or Trade at Actual Cash Value, Payments Based On 18% APR or minimum carrying charge of \$35 O.A.C., Lay by plans available, Other Requirements may apply. Call For Details

2003 Toyota Tundra



**\$2,500 Down
\$316.61 For 32 Mo.*** Neat Access Cab Limited, Wow, 4.7L V8, Power Auto, Power Windows, Power Locks, Mirrors, Seats Six, Cloth 254K **\$10,500**

2005 Honda CR-V



**\$1,575 Down
\$231.84 For 33 Mo.*** 4x4, Sport Utility, Nicer EX Model, EZ On Gas, 4 Cyl, Auto, Air, Atc, Pleasing Color, Clean Interior, Auto Start **\$7,575**

2008 Chevy Suburban 4x4



**\$4,500 Down
\$387.17 For 42 Mo.*** Black On Black, Fancy LTZ, Quads, Rear Seat, DVD, Sunroof, Nav, Htd Leather, Drives Great **Just \$16,500**

2006 Chevy Trailblazer



**\$1,570 Down
\$224.85 For 30 Mo.*** Extended 7 Pass, Cloth, 4200 I6 Cyl, 4x4, Just 142K, Sunroof, Alum Wheels, Nice Tires, Sporty SUV **For \$6,970**

2006 Chevy Crew Cab



**\$2,380 Down
\$307.15 For 42 Mo.*** 4x4, Z71, 6 Passenger, Cloth Power Seat, Air, Etc, AutoStart, Clean Short Box, 242K Come & Drive It **Only \$11,900**

2004 Chevy 3/4 Ton Diesel



Heavy Duty 4x4 Duramax Diesel, Long Box, Crew Cab, LT, Leather, Bose, AutoStart, Recent Motor Work, **Only \$18,600**

2008 Chevy Colorado



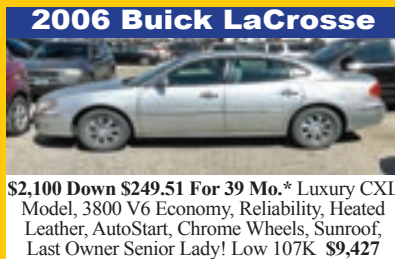
\$3,500 Down \$317.86 For 48 Mo.* Crew Cab LT, Z71, 4x4, Only 146K, 3.7L Power, Clean Cloth, Tonneau Cover, Power Locks, Expect It To Look Nearly New! **\$14,321**

2003 Ford King Ranch



\$1,555 Down \$289.21 For 36 Mo.* F150 Crew Cab 4x4, Nice Glass Topper, AutoStart, Heated Leather, All The Goodies, Only 194K **\$9,555**

2006 Buick LaCrosse



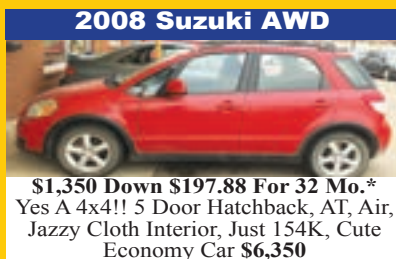
\$2,100 Down \$249.51 For 39 Mo.* Luxury CXL Model, 3800 V6 Economy, Reliability, Heated Leather, AutoStart, Chrome Wheels, Sunroof, Last Owner Senior Lady! Low 107K **\$9,427**

2010 Ford Escape 4x4



\$1,877 Down \$287.15 For 42 Mo.*, Fancy Limited, Heated Leather, Sunroof, DVD, Auto Start, FlexFuel V6, Power Seat, Chrome Wheels, Only 169K **\$10,777**

2008 Suzuki AWD



\$1,350 Down \$197.88 For 32 Mo.* Yes A 4x4!! 5 Door Hatchback, AT, Air, Jazzy Cloth Interior, Just 154K, Cute Economy Car **\$6,350**

2001 Toyota RAV4



\$1,575 Down \$237.46 For 32 Mo.* 4x4 SUV, 2.0L, Auto, Air, Cruise, PW, PDL Etc, Just 167K, Sunroof, Nifty L Model **For \$7,575**

2004 Ford Escape 4x4



\$1,350 Down \$197.88 For 32 Mo.* 3.0L V6, Auto, Air, Power Locks, Windows, Ect XLT, Twotone, Leather, Nearly New Tires, Just 178K **\$6,350**

2004 Chevy Malibu



\$983 Down \$184.95 For 14 Mo.* 4 Door, LS, V6, Cloth, Alum Wheels, Trunk Wing, 191K, Golly Gee **\$3,303**



WHEELCHAIR VAN
2007 Dodge Grand Caravan SE Wheelchair Van
Lowered Floor, Power Ramp, Tie Downs, Only 91K, 3.3L V6, Power Seat, Cruise, Air, Etc., Auto Start, "Splendid Condition" **\$11,700**



cherenautolc.com

CHEREN

AUTO

701-239-9999 4050 Main Ave Fargo

Prairie Dental Centers, PA

A General Dental Practice

David Resnick, DDS

*Diplomate Of
American Board Of Oral Implantology*

Debra Ettle, DDS

*Diplomate Of
American Orthodontic Society*

Alex Provo, DDS

**Family Dentistry • Braces
Oral & Implant Surgery • IV Sedation**

Ada.....**218-784-7119** Mahnomen.....**218-935-9340**

Twin Valley.....**218-584-5193** Fertile.....**218-945-6111**

www.prairiedentalcenters.com

Accepting New Patients

Prairie Dental Centers since 1976, continuous care in the Ada, Twin Valley area.

Since 1992, Debra Ettle, DDS and David Resnick, DDS have been providing general dentistry and specialty care.

Since 1993 – Implantology/oral surgery

1994 – Orthodontia (braces)

1998 – I.V. Sedation

In 1999 Dr. Resnick became a board certified implantologist, a Diplomate of the American Board of Oral Implantology

In 2005 Dr. Ettle became a Diplomate of the American Orthodontic Society.

In July 2015, Alex Provo, DDS joined Prairie Dental Centers, having graduated from U of M Dental School in 2015. He is from the Detroit Lakes area originally.

He is committed to providing the same honest care in a timely manner that Dr. Ettle and Dr. Resnick have provided the past 26 years.

Prairie Dental Centers is a Delta Dental Provider.

K&K TOWING

- 24 HR Towing
- Tire Changes
- Winch-outs



Accepts All Roadside Assistance **701-238-4701**

Serving Norman - Mahnomen & Surrounding Counties

We also buy cars and pick them up for free!

WANTED TO BUY: TRACTORS & FARM MACHINERY



BIEWER'S

Tractor Salvage, Inc.

16242 140th Ave. So
Barnesville, MN 56514

Gary & Don
218-493-4696

12047

Visit our Website for Pictures:
www.salvagetractors.com

The Promoter

AVAILABLE AT ALL AREA HORNBACHERS,
CASHWISE, FAMILY FARE AND HUGO'S
SUPERMARKETS
...AND 102 AREA TOWNS!

REDRIVERPROMOTER.COM

ads@redriverpromoter.com

218-861-6708



COMMERCIAL • RESIDENTIAL • RURAL
Garbage pickup service and dumpster rental • Roll-Off Service Available

218-784-4090
Highway #9 North • Ada, MN

The Red River PRIME TIME Promoter

Six Things You Should Be Asking Your Pharmacist...But Aren't

(StatePoint) An estimated 4.5 billion prescriptions will be filled this year in the United States, with about half of consumers taking at least one prescription medication over the past 30 days.

"You'd think we would be better at communicating with our pharmacists - just as we do with our other health care providers, like doctors, nurses, and dentists," says Susan Peppers, R.Ph., vice president of Pharmacy Practice at Express Scripts Pharmacy. "Unfortunately, it's just not the case."

In fact, a JD Power study shows that only 10% of people talk to a pharmacist when ordering or receiving their medications. Pharmacists at Express Scripts Pharmacy were asked what are the top six questions patients should be asking their pharmacists, but don't. Their answers offer insights into why we should take the time to ask these questions and why pharmacists play an important role in our health care.

Continued on page 39



The Normandy

GREAT 55 AND OLDER
Senior Living Apartments
Available at the Normandy in Twin Valley!

Have your own apartment and independence!
At The Normandy we emphasize choices,
independence and housing with services.
Call us today to set up a tour at
218-584-5183 or 218-456-2105
LOCATED IN TWIN VALLEY, MN



Reach 50,000 Readers in 102 Communities!!
ADVERTISE IN THE RED RIVER PROMOTER
ads@redriverpromoter.com - 218-861-6708

A Better Way to Live....

Having your own apartment and independence is what it's all about. At Heritage House in Halstad, we emphasize choices, independence and housing with services. Heritage House is connected to the Halstad Living Center, which provides skilled nursing care. This enables us to be equipped with emergency call systems for our residents whenever the need arises. The Heritage House is also attached to a medical clinic. We can set you up with as much assistance as desired. It is our goal to promote each individual's ultimate independence and happiness!

Two Bedroom Apartments Open and Available For Rent Now!



Call us today to schedule a tour at
218-456-2105



Heritage House • 133 4th Ave. E, Halstad, MN 56548 • 218-456-2105 • halstadlivingcenter.com

Check Out These Great 2 Bedroom Apartments!

in
East Grand Forks, MN

Heritage Highlands

1115 3rd Ave NW
East Grand Forks, MN



Northwoods Park

1819 3rd Ave NW
East Grand Forks, MN

D. W. JONES 
MANAGEMENT

Call 218-547-3307
www.dwjonesmanagement.com

Apply online at www.dwjonesmanagement.com

Check Out These Great 2&3 Bedrooms

in
Crookston & Fisher, MN



Greentree Square II
1100 Barrette Street
Crookston, MN

**ALL PROPERTIES
HAVE A
MOVE-IN
SPECIAL!**

Crookston Townhomes

205 Johnson Place
Crookston, MN



Fisher Townhomes

500 Thompson Avenue
Fisher, MN

Agassiz Townhomes

1601 N Broadway
Crookston, MN



D. W. JONES 
MANAGEMENT

Call 218-547-3307
www.dwjonesmanagement.com
Apply online at www.dwjonesmanagement.com



Halstad Living Center

Member of Lutheran Homes

133 4th Ave. E., Halstad, MN 56548
lutheranlivingcenter.com
218-456-2105 • Fax: 218-456-2290

Private Room Regardless of Payer Source!

- Attached Medical Clinic and Housing with Services Facility
- Physical, Occupational and Speech Therapy, Inpatient and Outpatient
- Adult Day Care and Respite Care Available
- Hospice Services
- Medicare / Medicaid Certified

Openings Available

CALL 218-456-2105



“Living With a Caring Family!”



Ramblin' Road

By Tom "Roadrunner" Blair

Just a retired old coot

I'm not a Republican and I am not a Democrat... I'm just a retired old coot trying to stretch my Social Security and life and trying get to the end of my roll. The last presidential race left me feeling like I was, "Gambling on number one or gambling on number 2."

I know... Trump is an egotistical, loud mouth, bully that was constantly bad mouthing anyone who got in his way, even a former prisoner of war.

I did quite a bit of research on just what Trump accomplished while he was in office and before the big China flu. It was a lot... look on the web and see for yourself. I doubt he'll ever become president again, I think we'll get someone like Senator Tim Scott from South Carolina. He's a black, Christian American... not a racist, hard working, honest and very educated. He is one of those, "We are all created equal and anyone who

wants to become something just have to work for it," kind of guy.

Getting to Biden now...I believe he has done a lot on this virus epidemic, probably saved thousands of people's lives, But I have been waiting quietly in the wings to hear some great things from the new president; you know... something that will make America greater. Not the higher gas, more inflation, more workers tax money going to support non-workers and people making more sitting on their butts than having a job.

And this border crap is going to break us financially. Over 11 million undocumented folks and growing... and the vast majority overstaying their visas and WHO is watching the door, gate or wall? 100,000 in February, 170,000 in March, then 180,000, and THAT'S ONLY the ones that were CAUGHT!

It costs a fortune for medical care and when you take all the insurance and cost for hospitalization and take the people who don't have insurance or medical care and just ADD their bill to those who work we will have become a welfare state.

I haven't found one thing Biden has done to make America greater... other than give a hell of a lot of money away that our current and future generation are going to pay for. E-mail me and let me know how much better off you think we are now.

Tom "Road" Blair
road742@aol.

Articles or ads that appear in The Promoter do not necessarily reflect the views of staff, officers or employees of The Promoter. Accuracy is the responsibility of the authors.

Prime Time

Continued from page 37

• Could this medication interact with my vitamins and supplements? Non-prescription medications and supplements can interfere with your prescription or cause unnecessary side effects. Talk to a pharmacist about all the medications you take, especially when you are prescribed any new medication.

• I'm taking multiple meds. What do I need to know? If you are on multiple medications for one or more chronic conditions you should speak with a pharmacist any time there is a change to your medication regimen to check for potential drug-drug interactions, medication overlap or gaps in care.

• What should I do if I forget to take my medication? Always consult with your prescriber on what to do if this happens. Having access to your pharmacist 24/7 is particularly important when you forget to take a dose

at the scheduled time. He or she can help you get back on track so that you get the full benefits of your medication. Having access to your pharmacist from the privacy of your home is another great reason to look for this 24/7 convenience.

• Could this prescription make me unsteady on my feet? Some medications can make you dizzy or drowsy, and there are other hazards in the home that can cause a fall, especially as one ages and needs to get up frequently during the night. A pharmacist can provide home safety tips to avoid an accident.

• I sometimes forget to take my meds. What's a reminder that works? Taking medications regularly can help avoid complications. When having trouble remembering to take your medications, turn to pharmacists, who can suggest tech solutions that will work for you, such as reminder apps. They can also help you

manage side effects you may be having and identify alternatives that you can discuss with your prescriber, when needed.

• Is there a more affordable option for my prescription? If you are having trouble affording your medication, your pharmacists can help with more affordable options and recommendations, such as generics or less expensive formulary options.

For more tips and resources, visit www.esrx.com/AskYourPharmacist.

"When it comes to whole-person care, pharmacists play a major role in the equation," says Peppers. "Communicating with your pharmacist regularly can help reduce the chance of complications related to your medications.



Dabblin 'n design
"Your Creative Edge..."

Locally owned and is your 1 STOP for personal or business needs!

Office: 701-281-7840
dabblin@msn.com

www.DabblinDesign.com

- Signs, Banners
- Vehicle Graphics
- Large Format Printing
- Design Services
- Brochures, Flyers, Cards
- Canvas Prints
- Personalized Party & Special Occasion Custom Gifts
- Glass Etching
- & MORE



Lucken Corp.
23125 430th St. SE, Winger, MN 56592

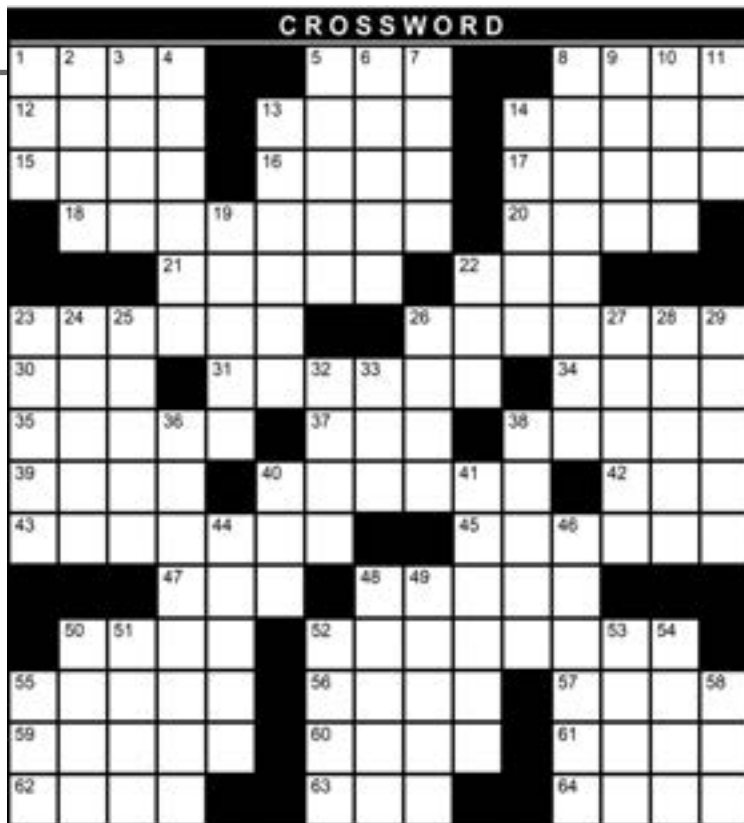
"Wants Your Scrap"
CASH \$\$\$ CASH \$\$\$ CASH \$\$\$
We also do Car Crushing & Tin Bailing!

Call for current pricing

Turn your junk into cash

Prepared Steel	Lugger and Container Services Available	Alum. Trans.
Unstripped Motors		Radiators
Unprepared Steel		Die Cast
Tin		Stainless Steel
Car Bodies		Aluminum
Batteries		Copper
Brass		Lead

Call 1-800-874-4107
Ask for Jeff or John
jeff@luckentrucks.com or john.lucken@luckentrucks.com



THEME: GOLDEN AGE OF HOLLYWOOD ACROSS

1. * ____ Code, or self-censorship guidelines for movies
5. Ship pronoun
8. ____ vera plant
12. Tiny piece of anything
13. Dateless one
14. Twist and distort
15. "Animal House" party garb
16. Cantatrice's offering
17. Frost-covered
18. *Mary ____, star of 52 films and recipient of 1976 Academy Honorary Award
20. Rounded protuberance
21. Breaks off
22. Crime scene acronym
23. One who insists on implementing #1 Across
26. Anxiety, pl.
30. U.N. working-conditions agency
31. A-one
34. Do like exhaust pipe
35. Students' dwellings
37. Between sol and ti
38. Parkinson's disease drug
39. Larger-than-life
40. For the most part
42. ____ Aviv
43. Allow to rejoin
45. Between Paleocene and Oligocene
47. FEMA provisions, e.g.
48. *Instrument central to 1945's "A Song to Remember"
50. Manage without help
52. *Marx Brothers' 1933 classic
55. Florentine iris
56. Fourth largest Great Lake
57. *Hitchcock's "The Man Who ____ Too Much"
59. Make children, biblical
60. Malicious look
61. Highest volcano in Europe
62. Object of worship
63. Always, in verse
64. Like happy people's glasses

DOWN

1. *Humphrey Bogart's Fedora, e.g.
2. At the summit
3. Hanna-Barbera anthropomorphic bear
4. Kellogg's Sugar ____
5. Leather razor sharpener
6. Often used to pull #22 Across
7. Archaic expression of surprise
8. *Like "Snow White and the Seven Dwarfs"
9. Mary's pet
10. Nabisco sandwich
11. Former times
13. **"The Snows of Kilimanjaro" type of adventure
14. Straining sound
19. Nautical measures
22. Party bowlful
23. Pressed beverage
24. Skip the big wedding
25. Waterwheel
26. *Drew Barrymore's grandfather
27. What actors do
28. Mature, as in fruit
29. Like an expired cracker
32. Surveyor's map
33. "Mai" follower
36. *Hattie ____, first African-American to win an Oscar
38. City in France
40. Prefix for central
41. Deep throat, e.g.
44. Middle
46. Slow ____ or pressure ____
48. Baby food, e.g.
49. More unfriendly
50. *Ginger's dance and movie partner
51. Therefore or consequently
52. Mark for omission
53. Archaic "to"
54. Back-to-school purchase, pl.
55. ____-Wan Kenobi

Solution on page 44

© StatePoint Media

www.premierebuildings.com

**Shops - Machinery - Grain - Hay Storage
Commercial - Industrial**

PREMIERE BUILDING SYSTEMS All Steel Buildings
Serving the area for 29 years! Quality buildings at a reasonable price!

1-800-927-8835 • 701-239-5904

SUDOKU
FREE DATE CHANGES ON 2021 TOURS*

BEST OF HAWAII FOUR-ISLAND TOUR FROM \$2,599 TO \$2,349 (12 days, depart to port round)

CRIMSON CANYONS & MESAS NATIONAL PARKS TOUR FROM \$1,749 TO \$1,499 (10 days, depart June - Sept 2021)

YMT promo code N7017 **CALL 1-855-208-9533**

6				1	8			
		7			3			
			9	8			2	1
		6	5			1	9	
	3	4			1	6		
2	7			3	8			
			7				2	
			8		4			6

© StatePoint Media

Fill in the blank squares in the grid, making sure that every row, column and 3-by-3 box includes all digits 1 through 9.

Solution on page 44



Craig Rothfus, DDS, P.C.
701-636-4244
thetoothwiz.com

Dr. Craig Rothfus
7 West Caledonia Ave.
P.O. Box 176
Hillsboro, ND

Participant with



Schedule your next cleaning with one of our wonderful hygienists: Joni, Rita, Grace or Ashley.



Halstad Living Center
Member of Lutheran Homes

"Join our staff that is dedicated to providing EXCELLENT care!"

Now Hiring Full and Part Time RN or LPN Charge Nurse

12-hour day shift or 8-hour PM shifts available. Every 3rd weekend and every 3rd holiday.

We offer flexible hours along with generous wages and benefits including health insurance, paid time off and pension!

Apply online at www.halstadlivingcenter.com or call or stop by the business office at the Halstad Living Center. For further information you can call 218-456-2105.

EEOE/AA



HALSTAD TELEPHONE COMPANY
How To Connect

345 2nd Ave W, Halstad • 218.456.2125
124 E Caledonia Ave, Hillsboro • 701.636.2125
halstadtel.com • 800.457.2125

telephone • internet • cable television

CABLE/INTERNET

DISH TV \$64.99 For 190 Channels + \$14.95 High Speed Internet. Free Installation, Smart HD DVR Included, Free Voice Remote. Some restrictions apply. Promo Expires 7/21/21. 1-844-316-8876. (MCN)

Earthlink High Speed Internet.

As Low As \$49.95/month (for the first 3 months.) Reliable High Speed Fiber Optic Technology. Stream Videos, Music and More! Call Earthlink Today 1-855-679-7096. (MCN)

EMPLOYMENT/HELP WANTED

COMMERCIAL APPLICATORS

Competitive wage and benefits, meal allowance, paid lodging. Traveling position for railroad vegetation control, 60-80 hours/week. RAW (Cooperstown, ND). 888.700.0292 www.rawapplicators.com, info@rawapplicators.com. (MCN)

TRUCKERS! Do you want security, reliable equipment, and home time?

We have drivers making over \$80,000 and full benefits. No-touch freight. Small company since 1940. Call 507-460-9011. Apply on-line WWW.MCFGTL.COM (MCN)

HEALTH & MEDICAL

Life Alert. One press of a button sends help FAST, 24/7! At home and on the go. Mobile Pendant with GPS. FREE First Aid Kit (with subscription.) CALL 844-646-2333 FREE Brochure. (MCN)

SAVE UP TO 80% ON YOUR MEDICATION.

Eliquis, Xarelto, Viagra, Cialis and more. Licensed and Certified. Lowest Price Guaranteed. Call 877-636-0750 and get free shipping on your first order. (Open M-F). (MCN)

INCOME OPPORTUNITIES

Become a published author! Publications sold at all major secular & specialty Christian bookstores. CALL Christian Faith Publishing for your FREE author submission kit. 1-888-981-5761. (MCN)

MISCELLANEOUS

BATHROOM RENOVATIONS. EASY, ONE DAY updates! We specialize in safe bathing. Grab bars, no slip flooring & seated showers. Call for a free in-home consultation: 855-836-2250. (MCN)

Midwest Bus Tours

Medora Tour

July 6-8, 2021

All-inclusive tour

Black Hills of SD

July 15-20, 2021

Medora, Rapid City, Sioux Falls and Watertown

Branson Tour

November 13-18, 2021

All-inclusive tour with 7 big shows

Christmas in Minneapolis

December 3-4, 2021

Juven Tours and Travel, Inc

1008 24th Ave S
 Fargo, ND 58103

701-237-9000

Email: carrol@juventours.com

www.juventours.com

SCENTSY

Fill your life with beautiful scent, simply and safely
A new Independent Consultant is located in Hendrum

Jannette Wenshou Cell 612-916-0589

Check out my website nettawenshou.scentsy.us

You'll Like What Goes Into a Foltz Building

- Commercial and Industrial Buildings
- Agricultural Storage and Insulated Shops
- Garages
- Completely Erected With Warranty by Experienced Crews



Models Open 7 Days a Week



Detroit Lakes, Minnesota

800-255-9981

www.foltzbuildings.com

Classifieds, Housing, Notices & Jobs Promoter

AFFORDABLE LIVING!

Wonderful floor plan for every budget.



Ada, Minnesota

Call 218-280-9851 or visit us online at
www.gmmco.org
 Greater Minnesota Management is an equal housing
 opportunity provider

EDITORIAL INFORMATION

Articles or ads that appear in The Promoter do not necessarily reflect the views of staff, officers or employees of The Promoter. Accuracy is the responsibility of the authors.

1 MONTH FREE RENT
Make Your Move Today
FREE HEAT

In quiet two bedroom
 apartment in
HENDRUM, MN

Call
218-861-6207



**JACOBSON
 ELECTRIC**

218-456-2644
 Wallace M. Jacobson
 P.O. Box 84
 Halstad, Minnesota

Eliminate gutter cleaning forever! LeafFilter, the most advanced debris-blocking gutter protection. Schedule a FREE LeafFilter estimate today. 15% off Entire Purchase. 10% Senior & Military Discounts. Call 1-855-577-1268. Promo Code 285. (MCN)

Wesley Financial Group, LLC Timeshare Cancellation Experts.

Over \$50,000,000 in timeshare debt and fees cancelled in 2019. Get free informational package and learn how to get rid of your timeshare! Free consultations. Over 450 positive reviews. Call 877-326-1608. (MCN)

The Generac PWRcell, a solar plus battery storage system. SAVE money, reduce your reliance on the grid, prepare for power outages and power your home. Full installation services available. \$0 Down Financing Option. Request a FREE, no obligation, quote today. Call 1-877-381-3059. (MCN)

Never Pay For Covered Home Repairs Again! Complete Care Home Warranty COVERS ALL MAJOR SYSTEMS AND APPLIANCES. 30 DAY RISK FREE. \$200.00 OFF + 2 FREE Months! 1-844-596-1237. Hours Mon-Thu, Sun : 9:30 am to 8:00 pm Fri : 9:30 am to 2:00 pm (all times Eastern). (MCN)

LONG DISTANCE MOVING: White-Glove Service from America's Top Movers. Fully insured and bonded. Let us take the stress out of your out of state move. FREE QUOTES! Call: 877-351-0672. (MCN)

Put on your TV Ears and hear TV with unmatched clarity. TV Ears Original were originally \$129.95 - NOW WITH THIS SPECIAL OFFER are only \$59.95 with code MCB59! Call 1-855-958-5196. (MCN)

BUS DRIVER NEEDED

The Ada-Borup School District is in need of a Bus Driver, as they need to add an additional bus route.

Contact Shawn Roux at 218-784-5311.
 \EOE

¿Luchando con la deuda fiscal? ¡Resuelve su factura de impuestos ahora! Detener las acciones de colección negativas. Negociar pagos mensuales asequibles. Llame a United Tax Fix 1-855-587-1281(MCN)



- Underground Site Utilities
- Installation & Repair
- Emergency Repairs of Water & Sewer Lines



Cell: 701-219-9126

Office: 218-498-2475

LICENSED & BONDED

Call For Move-In Specials!

WHITE EARTH CONGREGATE HOUSING

WAUBUN, MINNESOTA

White Earth Congregate Housing has immediate openings for 1 bedroom units. Must be 62 years of age or 18 years of age with a disability.

Rent includes water, sewer, garbage and heat. Rent is based on income. Certain restrictions apply

For complete information call DW Jones Management, Inc. 218-547-3307 or www.dwjonesmanagement.com
CREATING BETTER LIVING!



Equal Housing Opportunity TTY 711



Halstad Living Center
 Member of Lutheran Homes

"Join our staff that is dedicated to providing EXCELLENT care!"

Now Hiring

CNA/TMA- FT or PT

A certified nursing assistants "CNA" main role is to provide basic care to patients, as well as assist them in daily activities. We offer flexible hours along with generous wages and benefits including health insurance, paid time off and pension!

Apply online at www.halstadlivingcenter.com or call or stop by the business office at the Halstad Living center. For further information you can call 218-456-2105. EEOE/AA

Classifieds, Housing, Notices & Jobs Promoter

Shelly, Minnesota



Beautiful 2 bedroom, 1 bath Apartments Available now!! Heat/Water/Trash Paid, W&D in every home, Private Screened in Patio's. We are now offering a 6 month lease!

Smoke free, and Pets are welcome.

Call 218-280-9851 or visit us online at www.gmmco.org

Greater Minnesota Management is an equal housing opportunity provider



Halstad Living Center
Member of Lutheran Homes

"Join our staff that is dedicated to providing EXCELLENT care!"

Now Hiring Full or Part Time

Housekeeping & Laundry

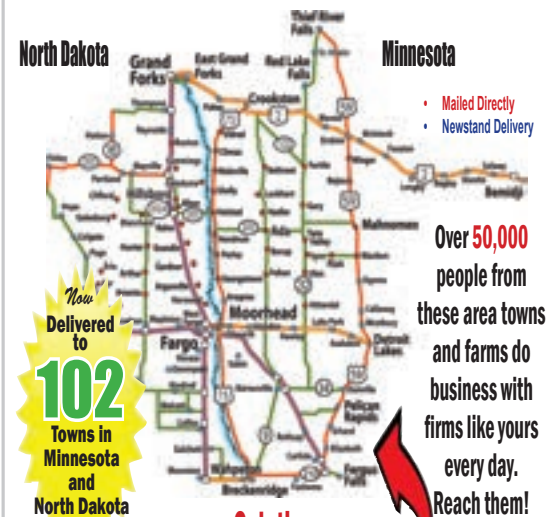
We offer flexible hours along with generous wages and benefits including health insurance, paid sick, vacation time and pension!

Apply online at www.halstadlivingcenter.com or call or stop by the business office at the Halstad Living center. For further information you can call 218-456-2105. EEOE/AA



Problem:

How do you get your message to these valuable customers?



Solution:

The Red River Promoter mails directly to every one of them!



Information - Ag - Business - Real Estate - Employment - Health - Autos - Home

300 Main St. E. • P.O. Box 10 • Hendrum, MN 56550 • 218-861-6708 • Fax: 218-861-6397

ads@redriverpromoter.com - www.redriverpromoter.com

The Largest Monthly News magazine in the Greater Red River Valley

International Student Exchange

Jannette Wenshau
Area Representative



(612) 916-0589

nettasaether@hotmail.com
northcentral.iseusa.org



Business Opportunity!
FOR SALE

ADA BUILDING CENTER - ADA

Due to retirement, the Ada Building Center is For Sale.

This profitable lumberyard/building center has been serving Ada and the surrounding communities for over 76 years.

The facility is located on 7.7 acres in Norman County on Highway 200 on the east edge of Ada.

Equipment and inventory included, plus an 88'x170' building center with a 30'x16' showroom display floor/office/shop and storage, all under one roof. (1740 sq ft display area, with 864 sq ft insulated shop, 11,972 sq ft cold storage).

Also a 44'x170' warehouse with 12'x97'6" open lean (4290 sq ft warehouse with 1170 sq ft open lean).

CONTACT DANNY OR DAVE AT 218-784-3661 FOR MORE INFORMATION

FOR GREAT TIRE BUYS AND SERVICE, SEE US AT

PCC PERLEY COMMUNITY COOP

Perley, MN

Perley Community Co-op shop is

OPEN MONDAY THROUGH FRIDAY

Call Andrew for all of your tire and automotive needs at 861-6561



Olsen Hardware

"We Appreciate Your Business"

Hillsboro, ND

701-636-4151



LEE BROS. INC.

Chevrolet • Buick • Chevy Trucks
SALES & SERVICE

Your Local GM Dealer

www.leebrosadamn.com

784-2000 (Ada) • 1-800-450-9999

TIRES

For All of Your Tire & Mechanical Needs
Car, Truck, Tractor & ATV Tires
Guaranteed Lowest Prices in the Area! See Jeremy

Magnuson Tires & Service

Grandin, North Dakota

484-5500 • Cell 701-261-0471

We Now Do Farm Service Calls!



Specializing in Residential Building and Remodeling

- New Construction
- Interior Trim
- Framing
- Basements
- Sheetrock
- Bathrooms
- Shingling
- Kitchens
- Windows & Doors
- Remodeling
- Siding & Soffit
- Additions

Matt Nelson

141 Hendrum Dr., P.O. Box 143
Hendrum, MN 56550

218.861.6533

MN Lic. #MN BC-706292 ND Lic. #ND 55118



Arthur Cenex

510 Hwy 18 S • Arthur, ND 58006

701-967-8586

Sudoku Solution

Continued from page 40

6	2	9	4	1	7	8	3	5
8	1	7	2	5	3	9	6	4
3	4	5	9	8	6	7	2	1
7	8	6	5	2	4	1	9	3
1	5	2	3	6	9	4	8	7
9	3	4	8	7	1	6	5	2
2	7	1	6	3	8	5	4	9
4	6	3	7	9	5	2	1	8
5	9	8	1	4	2	3	7	6

Julin Law Office, PLLC

Cynthia A. Julin, Attorney & Counselor at Law



318 East Main, Ada, MN 56510

Office: 218-784-2520

E-mail: cjulin@julinlaw.com

SEED

NETTUM SEEDS L.L.C.

CALEDONIA, NORTH DAKOTA

Rocky 701-430-1149

rocky.nettum@plantpioneer.com

NEW FOR 2021

LCS Trigger - LCS Rebel - Sy Valda

Pinnacle Barley



PIONEER
A DuPont Company



Limagrains
Cereal Seeds

Crossword Solution

from page 40

H	A	Y	S		S	H	E		A	L	O	E					
A	T	O	M		S	T	A	G		G	N	A	R	L			
T	O	G	A		A	R	I	A		R	I	M	E	D			
		P	I	C	K	F	O	R	D		U	M	B	O			
					K	N	A	P	S		D	N	A				
C	E	N	S	O	R				J	I	T	T	E	R	S		
I	L	O			T	I	P	T	O	P		E	M	I	T		
D	O	R	M	S		L	A	H		L	D	O	P	A			
E	P	I	C			M	A	I	N	L	I		T	E	L		
R	E	A	D	M	I	T				E	O	C	E	N	E		
					A	I	D			P	I	A	N	O			
		F	E	N	D				D	U	C	K	S	O	U	P	
O	R	R	I	S					E	R	I	E		K	N	E	W
B	E	G	E	T					L	E	E	R		E	T	N	A
I	D	O	L						E	E	R			R	O	S	Y



Hunter Grain Company Hunter and Gardner, North Dakota

Propane, Propane tank rental,
Fertilizer, Seed, Grain Marketing,
Agronomy, Custom Applications

Hunter - 701 874-2112

Gardner - 701 484-5502

Toll Free - 800 441-2474

www.huntergrain.com



Trucks and Trailers



Pusher and
Tag axles



Engines

LUCKEN TRUCKS PARTS

&
SERVICE



PTO's
Pumps
Wet Kits



Differentials



Hoods, Cabs
&
Body Parts



Transmissions

All trucks come with 30
point inspection, DOT
sticker, and 30 day warranty
on drive train with optional
1 year 100,000 Mile
warranty.



New, Used
& recap
Tires
And
Much More

Engine overhauls, clutch,
transmission, differential
and wet kit installations by
certified mechanic, DOT
inspections, and all other
service work.

TOLL FREE 1-800-874-4107 www.luckentrucks.com FAX 1-218-938-4194
DEALING WITH HONESTY AND INTEGRITY FOR OVER 35 YEARS OF SERVICE

The Promoter

AVAILABLE AT ALL AREA HORNBACHERS,
CASHWISE, FAMILY FARE AND HUGO'S
SUPERMARKETS

...AND 102 AREA TOWNS!

REDRIVERPROMOTER.COM

ads@redriverpromoter.com

218-861-6708



UPCOMING AUCTION SALES

SATURDAY JULY 10

10:00 AM

**David Hedrich Estate
Collectible Auction**

HUGE ESTATE AUCTION

LOCATION: 3005 CO RD 30, GARY, MN.
3005 CR 30, Gary, MN, US

SELLING BETWEEN 400-500 SNOWMOBILES. SOME
EXTREMELY RARE AND UNUSUAL ONES. LOTS OF
SNOWMOBILE ENGINES. HOODS. SEATS. UN-
DER CARRIAGE PARTS. TRACTORS. SKID STEER.
POLARIS RANGER. PICKUPS. BOATS. OUTBOARD
MOTORS. SHOP TOOLS. PLUS LOTS MORE. WILL BE
RUNNING 2 RINGS.

GENE HEDRICH -PHONE 218-356-8197

SUNDAY, AUGUST 1

11:00 A.

**Roy Pinske Farm Retirement
Farm Auction**

LOCATION:

34758 250TH AVE, OGEMA, MN. 56569

SELLING JD 4250MFWD WITH LOADER. NEW
HOLLAND BOOMER WITH PLASTIC STILL ON SEAT.
DRILLS. TRUCK. PICKUP. MOWER. CATTLE AND
LIVESTOCK ITEMS. 1956 CHEVROLET BELAIR 4
DOOR HARDTOP RESTORED NICE. LOTS OF GOOD
ANTIQUES AND COLLECTIBLES.
WATCH FOR DETAILS COMING SOON.

P.O. Box 62, Halstad, MN 56548 - 218-766-6797
MN LIC # 54-12-003 / ND LIC # 367 / bergauct@aol.com
www.bergauctions.com - www.midwestauctions.com

Looking for an affordable new
neighborhood within minutes of

FARGO-MOORHEAD

to

BUILD YOUR NEW HOME?

Welcome Home to



LARGE LOTS - ONLY \$4,000

NO SPECIALS

ONLY 25 MINUTES NORTH OF MOORHEAD

Enjoy small town living at it's best! Great building location 25 minutes from Moorhead.
Large Lots, No Specials, Free water & sewer for two years! Down Payment assistance
available up to \$10,000. Here's your chance to be a part of a great community!

Contact the City of Hendrum at 218-861-6210 or
Eric Smart at Home Crown Realty 701-866-2675
for more information.

Email: Hendrum@Loretel.net

HendrumMN.com

Do you have



...lifetime...
**PAINT
 GUARANTEE**
**GLASS
 REPLACEMENT**
and.....
**ROCK CHIP
 REPAIR**

Choose Elite Auto Body and Glass. We help you get there with our loaner vehicle, while we fix your car.

Elite
 Auto Body and Glass

Elite Auto Body and Glass
 129 3rd Ave E | Hunter ND
701.874.2272
 eliteautobodyandglass.com

Trail Feed, LLC

Open 8 am - Noon and 12:45 pm - 5 pm Monday-Friday

See us for all your beef cattle, swine, sheep, horse & poultry feed needs. We also carry an extensive variety of pet foods. Trail Feeds will now carry Grand Champion Creep B-60 available by the bulk ton or tote at competitive prices!



Your local dealer for
 Crystalyx
 Protein Tubs

We also have available
 Show

Trail Feed, LLC

724 1st St. NE
 Hillsboro, ND 58045
 Zach Grothmann 701-430-9365
 Kevin Grothmann 701-430-9367

Gourmet Game Processing

CUSTOM ORDERS IN BULK - RETAIL SALES

SEE US FOR A COMPLETE SELECTION OF STEAKS AND CHOPS FOR GRADUATIONS, FUNDRAISERS, REUNIONS AND MORE!



218-236-7440

gourmetgame@ideaone.net

121 Center Avenue W - Dilworth, MN

**JOIN
 THE TEAM**

The
Promoter

Since 1992
 Now Also Available at all Area
 Hornbachers, Family Fare,
 Cashwise and
 Hugo's Supermarkets!



Delivering to the Heart of the
 Red River Valley Since 1992

In Print and Online at redriverpromoter.com

Sales Positions Open in Fargo-Moorhead & GF Area

If you are looking for a fun and rewarding career in advertising sales, contact Heritage Publications, a company that has been doing business in the Red River Valley for over 27 years. We pay one of the highest commission rates anywhere in this region. Along with great products, unique sales promotions, flexible hours and a fun work atmosphere, it is one of the few jobs that never limit a person's income.

We believe in thinking "outside the box," and selling advertising that is affordable and effective to create long term partnerships with our clients. We also feature specialty programs that enable our sales reps to sell long term contracts to build up their base.

In order to succeed at this job, though, a person needs to be ambitious, outgoing, honest and positive. Like any career involving sales, the effort you put forth determines how successful you can be.

If you are currently involved with sales, especially in advertising, and feel you would like to make a change and learn more about Heritage Publications, give us a call or email us. If you have never been in ad sales before, but feel that you have the drive and personality to make it a great new career, let's talk.

THE PROMOTER / HERITAGE PUBLICATIONS, LLC

218-861-6708 - john@redriverpromoter.com

Proud member of Midwest Free Community papers

Pirate Panther All-School Reunion is looking for volunteers

The Pirate Panther All-School Reunion, scheduled for July 23-25, is asking for volunteers in a variety of capacities.

Enthusiastic but not necessarily professional dance teams are needed for the Saturday night program, "Dancing Through the Decades." Each team would perform a dance from a decade between 1905 to 2021. The team can either choose the dance and song or can be assigned one if that is preferred. Teams can be drawn from employees, families, clubs, church groups, government entities, or simply a group of friends.

A volunteer with technical expertise is also sought who could set up and monitor the computer, projector and screen needed during the program. If interested, please contact Kim Herberger at kthem@rrv.net

Alumni of the schools are asked to share a memory, story, or anecdote either momentous or: fleeting that may be incorporated, into the evening program. Messages can be sent to henderso@uwosh.edu.

The Pirate Panther All-School Reunion celebrates the Halstad and Norman County West schools, both of which are now closed. All alumni and friends are invited.

For more information on the reunion, check the "Pirate-Panther All School Reunion" on Facebook.

Host Families Wanted!

Together, We Can Make a Difference in our Community and the World! Looking for caring Host Families to welcome international teens into their heart and home for a semester or academic school year. Develop a lifetime friendship and make a teenager from abroad realize their dream by sharing your Minnesota and Wisconsin hospitality. Students are 15-18 years old, speak English, bring spending money, and have full medical insurance. A volunteer host family provides a bedroom (which may be shared), meals in the home and a caring environment for their student. Host families can be single-parent families, retired couples, families with young children, no children, as well as those with teenagers or empty-nesters.

**Call Jannette Wenshau
at 612-916-0589
(located in Northern
Minnesota)**



"Let's meet and I can share my 3 experiences with hosting a foreign exchange student. It is soooooo rewarding and the memories lasts a lifetime!"



**Farm & Home Delivery
For Bulk Fuel Call:
701-484-5641**

Hunter Oil Company

Gas - Diesel Fuel - Snacks

Check out the new improvements being
made to the C-Store!

HUNTER, ND - 701-874-2224

Your blueprint for energy savings



A little planning goes a long way when it comes to lowering your bill. Red River Valley Co-op Power can help. Rebates are available for members. For information, go to www.rrvcoop.com or call 800-788-7784.



MAKE THIS THE SUMMER EVENT

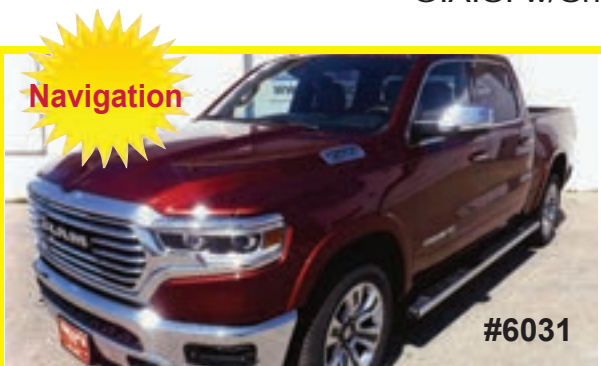


YOUR PURCHASE INCLUDES

Oil Change Discounts, Free Loaner Cars, Pickup & Delivery Service. Call Or Stop In & Talk to Kelly, Chad, Lexi or John!

ORDER YOUR NEW 2022 VEHICLE TODAY!

* O.A.C. w/Chrysler Capital



NEW 2021 Ram 1500 Crew Cab Longhorn 4x4
HEMI, Heated & Cooled Leather, Heated Steering Wheel, 8.4" Touch Screen Radio w/ Backup Camera, Bedliner, Tow Pkg, Running Boards



NEW 2021 Jeep Gladiator Willy's Edition 4x4
V6, Heated Cloth & Steering Wheel, Backup Camera, AutoStart, Touch Screen Radio, Tow Package



NEW 2021 Jeep Cherokee Trailhawk 4x4
Heated Cloth & Steering Wheel, Backup Camera, AutoStart, Touch Screen Radio, Tow Package, 24+ MPG



Celebrating Our
40TH ANNIVERSARY
Thank You
for
YOUR BUSINESS!



NEW 2021 Dodge Durango GT Blacktop AWD
Heated Leather & Steering Wheel, 10.1" Touch Screen Radio w/ Backup Camera & Navigation, Power Liftgate, 2nd Row Bucket Seats

CHECK OUT OUR NEW INVENTORY ONLINE AT WWW.KELLYSCHRYSLERCENTER.COM

PAYING TOP DOLLAR FOR QUALITY TRADE-INS!

Kelly's Chrysler Center

Chrysler • Dodge • Jeep • Ram

Hwy 200 West, Ada, Minnesota 56510

218-784-2002 Toll Free 833-534-0608

www.kellyschryslercenter.com